

CANADIAN METER STAMP NEWSLETTER

Editor:- Ross Irwin, 903-24 Marilyn Dr., Guelph, ON., N1H 8E9 — E-mail - rossir@inforamp.net
Associate Editor and Treasurer:- Dave Cooper, 35 South High St., Thunder Bay, ON., P7B 3K3

NO. 51

1997

EDITOR'S NOTES

David writes me that his personal time schedule has improved and that he will now be able to spend more time on our hobby. This issue is the first in our second half of 100. It is time to regroup, assess our progress, and determine where we go from here. This issue will be mostly text.

My view of direction is to record changes in the technology, record a description of the mechanical indicia used in franking mail and to place these items into categories or classes so it is easy to communicate between persons in the hobby.

Our most important project is the development (and printing) of a catalogue of postage meter indicia as used in Canada. Once the inventory is complete we will make the needed corrections and then try to find a printer or do it ourselves. What would be the market volume?

Back to this issue. The issue is primarily an index to our catalogue, based on what we have listed in the News Letter. What I ask you to do is use the following pages as a check list to your own collection. If you own, or know of, an item that is not include in our catalogue please send in a copy. There are also some items in our list which should not be there. Please identify those you think are not constant varieties and should be removed. Also, if you have a better copy of any we illustrate would you send in a copy for our final catalogue.

Some persons only save the two digit number; that is, 1.1, 1.2, 1.3 etc and do not bother with the tertiary variety. There is certainly more chance for completing a collection.

The page setup is:- Column 1 is the type and sub-types used in our catalogue. Column 2 is the meter serial number as printed (if I can read it). Column 3 is a brief description of the type. Column 4 is the page of our Newsletter where the item is illustrated.

Some items do not have a number. Should they? What meter types have we not covered yet?

Can anyone add to the townmark types listed below. City is the top of the townmark, and Province is what is at the bottom of the townmark.

CITY	PROVINCE	METER NO.
E.T.L.C	H3C 1S0	1002122
CMPM-MPCF	H4Y 1C9	501123
H3C 1S0	QC	1010162
AB	T2E 0A0	1052574
blank	N2J 2X0	1004854
WLPP	L4W 1T0	1011060
L3R 0A1	ON	1052913
CMPP	T2E 0A0	631739

FRIDEN BUSINESS CARD

SINGER
MAILING EQUIPMENT

JIM CALLAHAN
DISTRICT MANAGER

4500 SHEPPARD A.V.E. EAST
UNIT # 45
AGINCOURT, ONT. M1S 3R6
TEL. 416-431-3163

FRIDEN BUSINESS CARD

f.m.e. corporation
Friden
mailing equipment
equipment postal

4500 Sheppard Ave. E.
Agincourt, Ontario
M1S 3R6
(416) 298-2100

Kitchener
(519) 744-7761

FRIDEN SAFETY TAPE



CMSG METER CATALOGUE

TYPE	SERIAL	DESCRIPTION OF TYPE	PAGE
1.1	4001	Basic type, indicia 25 mm high, 4001	19.5
1.1.1	0000	TM - OTTAWA - SAMPLE	19.5
1.1.1a	0000	TM - MONTREAL - SAMPLE	19.5
1.1.1b	0000	TM - TORONTO - SAMPLE	32.2
1.2	4278	Basic type, license number, indicia 24 mm high	19.5
1.2.1		SAMPLE ????	
1.2.2	4043	TM - RETURN POSTAGE PREPAID	19.5
1.2.3	4188	TM - Province in full	19.6
1.2.4	4301	TM - Period after province in full	19.6
1.2.5	4042	DM - Blank	19.6
1.2.6	4049	TM - Postal station included	19.6
1.2.7	4025	SN - Tall numbers in serial	19.6
1.2.8	4040	TM - No townmark	19.6
1.2.9	4090	RM - License number inverted	19.6
1.3	4252	Basic type, no license number, indicia 24 mm high	20.9
1.3.1		SAMPLE ????	
1.3.2	4123	TM - RETURN POSTAGE PREPAID	20.9
1.3.3	4226	TM - Province in full	20.9
1.3.4	4192	TM - Period after province in full	20.9
1.3.5	4220	DM - Blank	20.9
1.3.6	4252	TM - No townmark	
2.1	502	Basic type. rectangle	20.10
2.1.1	509	TM - Province in full	20.10
2.1.2	501	RM - Error - 1 CENTS	20.10
2.1.3	512	TM - Larger townmark	20.10
3.1	197	Basic type - METER No	21.7
3.1.1	----	SPECIMEN	21.7
3.1.2	1447	TM - Broken inner circle	21.7
3.1.3	892	TM - Province abbreviated	21.7
3.1.4	561	TM - No townmark	21.7
3.1.5	1447	DM - As Type 5	21.7
3.1.6	634	RM - Error: 1 CENTS	21.7
3.1.7	1447	RM - Small figures of value	21.8
3.1.8	1459	TM - Large diameter	21.8
3.2	342	Basic type - METRE No	21.9
3.2.1	1426	TM - Broken inner circle	21.9
3.2.2	798	TM - Province abbreviated	21.9
3.2.3	1436	DM - As Type 5	21.9
3.2.4	549	TM - No townmark	21.9
3.2.5	2076	TM - Large diameter	21.9
3.2.6	612	RM - CENTS 10 mm long	21.9
3.2.7	612	RM - CENTS 9 mm long	21.8
3.3	607	Basic type - METER M No	21.10
3.3.1	886	TM - Broken inner circle	21.10
3.3.2	886	TM - Province abbreviated	21.10
3.3.3	454	DM - As Type 5	21.10

3.3.4	RM - Error: 1 CENTS	21.10
3.3.5	712 DM - Day omitted	21.10
3.3.6	609 DM - Year uncut die	21.10
3.3.7	454 TM - No townmark	21.11
3.3.8	580 DM - Month only	21.11
3.3.9	625 TM - Large diameter	21.11
	RM - Error: 4 CENT	24.17
3.4	1443 Basic type - METRE M No	21.12
3.4.1	1446 TM - Broken inner circle	21.12
3.4.2	1436 DM - As Type 5	21.12
3.4.3	1429 TM - Province abbreviated	21.12
3.4.4	1470 TM - No townmark	21.12
3.4.5	1441 TM - Large letters in town	21.12
3.4.6	890 SN - Tall numbers in serial	21.12
	699 TM - Inverted townmark and datemark	32.1
4.1	1021 Basic type - METRE	22.4
4.1.1	1021 SPECIMEN	22.4
4.2	1023 Basic type - METRE NO	22.4
4.2.1	1023 TM - Large diameter	22.4
5.1	40001 Basic type - Shield Type - 40001+	23.11
5.1.1	40369 TM - Broken inner circle	23.11
5.1.2	40235 TM - RETURN POSTAGE PREPAID	23.11
5.1.3	40023 TM - Province abbreviated	23.11
5.1.4	40383 DM - Blank	23.11
5.1.5	40003 RM - Error: 1 CENTS	23.11
5.1.6	40033 RM - Value 4.5 mm high	23.11
5.1.7	40208 TM - Large and small letter fonts	23.12
5.1.8	40317 TM - No townmark	23.12
5.1.9	40005 DM - Day omitted	23.12
5.1.10	40370 DM - Year only	23.12
5.1.11	40063 SN - Recut die	23.12
5.1.12	40065 TM - RETURN POSTAGE PREPAID inverted	23.12
5.1.13	VOID SPECIMEN	23.12
	40012 RM - "CENT" off-centre due to "S" removed	24.17
	SN - 40000 serial block	
	SN - 46000 serial block	
	SN - 48000 serial block	
	40159 TM - CANADA in townmark	
6.1	46069 Basic type - Square rate mark - 400001+	23.13
6.1.1	46064 TM - RETURN POSTAGE PREPAID	23.13
6.1.2	46070 TM - Broken inner circle	23.13
6.1.4	46130 SN - Widely spaced numerals	23.13
6.1.5	46055 RM - Error: 4 CENT	23.13
6.1.6	40110 RM - Value 4.5 mm high	23.13
6.1.7	48009 TM - P.O.W. No	23.14
6.1.8	46067 TM - No townmark	23.14
6.1.9	46060 DM - Year only	23.14
6.1.10	46027 DM - Day omitted	23.14
6.1.11	46124 TM - Large and small letter fonts	23.14
6.1.12	46039 RM - Error: 1 CENTS	23.14

6.1.13	00000 TM - SPECIMEN	23.14
	48010 DM - Blank	
	46200 DM - Year omitted	
	SN - 40000 serial block	
	SN - 46000 serial block	
	SN - 48000 serial block	
7.1	84002 Basic type - METRE NO.	25.7
7.1.1	84011 SN - Larger numerals	25.7
7.1.2	----- TM - SPECIMEN	25.7
7.1.3	84011 DM - Date omitted	25.7
7.1.4	84007 DM - Day omitted	25.7
7.1.5	82413 TM - Townmark inverted	25.7
	00000 TM - SPECIMEN	
	SN - 82000 serial block	
	SN - 84000 serial block	
7.2	82511 Basic type - METRE	26.10
7.2.1	TM - Broken inner circle	26.10
7.2.2	TM - Inverted	26.10
7.2.3	82777 TM - RETURN POSTAGE PREPAID	26.10
7.2.4	82892 TM - RETURN POSTAGE PREPAID/PORT DE RETOUR PAYE	26.10
7.2.5	82943 DM - As Type 3	26.10
7.2.6	82568 DM - As Type 11 with Roman Numerals	26.10
7.2.7	82454 TM - Large and small type fonts	26.11
7.2.8	82803 TM - No townmark	26.11
7.2.9	82545 DM - Blank	26.11
7.2.10	82454 DM - Date omitted	26.11
7.2.11	82654 TM - Postal station included	26.11
7.2.12	82797 TM - Dingbats at bottom	26.11
7.2.13	00000 TM - SPECIMEN	26.11
	82740 TM - SPECIMEN	
7.2.14	82453 SM - Small letters	26.12
7.2.15	82601 RM - New style numbers and letters	26.12
7.2.16	82769 DM - As Type 11, sans serif	26.12
7.2.17	82440 DM - Large diameter	26.12
7.2.18	82728 DM - Month missing	26.12
7.2.19	82654 TM - Province abbreviated	26.11
	SN - 82000 serial block	
	SN - 84000 serial block	
7.3	47647 Basic type - METER-COMPTEUR	27.13
7.3.1	83398 DM - Blank	27.13
7.3.2	47393 TM - No townmark	27.13
7.3.3	83080 DM - Day missing	27.13
7.3.4	84427 TM - Province abbreviated	27.13
7.3.5	84038 TM - N.P.O. in townmark	27.13
7.3.6	84496 TM - RETURN POSTAGE PREPAID	27.13
7.3.7	83540 TM - POSTAGE PAID RETURN	27.14
7.3.8	84859 TM - Inverted	27.14
7.3.9	48996 DM - As Type 3	27.14
7.3.10	84958 DM - As Type 11	27.14
7.3.11	48736 TM - Two font sizes used	27.14
7.3.12	00000 TM - SPECIMEN	27.14
7.3.13	47279 DM - Uncut numeral	27.14

7.3.14	83542 DM - Month missing	27.15
7.3.15	47678 DM - As Type 11, sans serif	
7.3.16	83854 DM - Smaller font RM - Missing	
7.4	04003 Basic type - METER NO, setting 5	27.15
7.4.1	04002 TM - RETURN POSTAGE PREPAID	27.15
7.4.2	04001 DM - Blank	27.15
7.4.3	04000 TM - Postal station included	27.15
7.4.4	04001 TM - Province in full, with period	27.15
7.5	04007 Basic type - METRE, setting 5	28.11
7.5.1	04004 DM - Blank	28.11
7.5.2	04004 TM - Province in full	28.11
7.5.3	04004 TM - Postal station included	28.11
7.5.4	04005 DM - DM/Y/T	28.11
7.5.5	04004 TM - N.P.O. in townmark	28.11
7.5.6	00000 TM - SPECIMEN	28.11
7.6	54000 Basic type - METRE, setting 21	28.12
7.6.1	00000 TM - SPECIMEN	28.12
7.6.2	54000 TM - RETURN POSTAGE PREPAID 54000 TM - Province in full	28.12 34.4
8.1	54040 Basic type - METRE TM - SPECIMEN	29.9 11.1
8.1.1	54063 TM - RETURN POSTAGE PREPAID	29.9
8.1.2	54018 TM - RETURN POSTAGE PREPAID/PORT DE RETOUR PAYE	29.9
8.1.3	54028 DM - Square included	29.9
8.1.4	54001 TM - Province abbreviated	29.9
8.1.5	54020 TM - Period after province	29.9
8.1.6	54033 SN - Small serial number font	29.9
8.1.7	54026 DM - Blank	29.10
8.1.8	54017 DM - M/Y	29.10
8.1.9	54083 DM - Y	29.10
8.1.10	54072 DM - M(RN)/Y	29.10
8.1.11	54085 DM - DM/T/Y	29.10
8.1.12	54051 TM - No townmark	29.10
8.1.13	SN - Open "4" type	29.10
8.1.14	54055 DM - Arabic month included	34.4
8.2	54085 Basic type, METER-COMPTEUR	30.6
8.2.1	54018 TM - RETURN POSTAGE PREPAID	30.6
8.2.2	54085 TM - Province abbreviated	30.6
8.2.3	54034 DM - Blank	30.6
8.2.4	54090 TM - Period after province	30.6
8.2.5	54089 DM - DM/T/Y	30.6
8.2.6	54087 SN - Open "4" type	30.6
8.2.7	54105 TM - Postal station included	30.7
8.2.8	54093 TM - New style font used	30.7
8.2.9	54037 DM - Y	30.7
8.2.10	54094 TM - No townmark	30.7
8.2.11	54111 SN - Small font used	30.7
8.2.12	54058 DM - M(RN)/y	30.7
8.2.13	54115 DM - M/Y	30.7

8.2.14	54100 DM - Solid square	34.4
8.3	54112 Basic type, setting 11	30.8
8.3.1	55011 RM - Fractional rate	30.8
8.3.2	54112 TM - Province in full	30.8
8.3.3	04015 DM - Blank	30.8
8.3.4	55000 SN - Small font	30.8
8.3.5	----- TM - SPECIMEN	30.8
8.3.6	54127 TM - RETURN POSTAGE PREPAID	30.8
8.3.7	55011 DM - Y	
8.4	04016 Basic type, setting 5	30.9
8.4.1	04016 DM - RN in 2 lines	30.9
8.4.2	04017 DM - RN in 1 line	30.9
8.4.3	04016 DM - RN in 3 lines	30.9
9.1	94000 Basic type, PB - J, 94000	31.8
9.1.1	00000 TM - SPECIMEN	31.8
9.1.2	94000 DM - MY	31.8
9.1.3	94000 DM - Y	31.8
9.1.4	94000 DM - Blank	31.8
9.2	94002 Basic type - METRE, PB-JD, 94001-94034	31.9
9.2.1	94024 TM - RETURN POSTAGE PREPAID	31.9
9.2.2	94028 TM - P.O. in townmark	31.9
9.2.3	94009 DEPT PPS at left	31.9
9.2.4	94009 TM - SUB P.O. included	31.9
9.2.5	94019 TM - Province abbreviated	31.9
9.2.6	00000 TM - SPECIMEN	31.9
9.2.7	94017 TM - Inverted	31.10
9.2.8	94006 DM - MY	31.10
9.3	94121 Basic type - METER-COMPTEUR, PB-JD, 94035-94125	31.11
9.3.1	94048 TM - RETURN POSTAGE PREPAID	31.11
9.3.2	94053 DM - Blank	31.11
9.3.3	94117 TM - Province abbreviated	31.11
9.3.4	94040 TM - P.O. in townmark	31.11
9.3.5	94071 TM - Inverted	31.11
9.3.6	94076 DEPT PPS at left	31.11
9.3.7	94122 TM - No townmark	31.12
9.3.8	00000 TM - SPECIMEN	31.12
9.3.9	94064 DM - MY	31.12
9.3.10	94071 SN - Large font	31.12
10.1	101 Basic type, C-O-P	24.3
11.1	140052 Basic type, PB - RT/RF	33.7
11.1.1	00000 CITY PROVINCE SPECIMEN - 5 digits	33.7
11.1.2	000000 CITY PROVINCE SPECIMEN - 6 digits, 2 dingbats	33.7
11.1.3	140340 TM - SPECIMEN, 2 dingbats	33.7
11.1.4	TM - RETURN POSTAGE PREPAID	33.7
11.1.5	143496 TM - PORT DE RETOUR PAYE	33.7
11.1.6	147392 TM - RETURN POSTAGE PREPAID/PORT DE RETOUR PAYE	33.7
11.1.7	TM - CANADA, with no province	33.8
11.1.8	145853 TM - Province abbreviated, with periods	33.8

11.1.9	152529	TM - Province abbreviated, no periods	33.8
11.1.10	148586	TM - CANADA, with province	33.8
11.1.11	144924	TM - Smaller font for province	33.8
11.1.12	143003	TM - Hyphenated postal station	33.8
11.1.13	140231	TM - NPO included	33.8
11.1.14	152423	TM - C.A.P.O.	33.9
11.1.15	156513	TM - Town spelled wrong	33.9
11.1.16	152622	TM - R.C.A.F. in tornmark	33.9
11.1.17	152400	TM - Postal substation included	33.9
11.1.18	143426	TM - P.O. included	33.9
11.1.19	140046	TM - Blank	33.9
11.1.20	148869	TM - TM and DM blank	33.9
11.1.21	154809	DM - Blank	33.10
11.1.22	144088	DM - DMY sans serif	33.10
11.1.23	144761	DM - DMY sans serif, tall	33.10
11.1.24	140953	DM - MDY, D is "0"	33.10
11.1.25	159928	DM - DMY, D is "0"	33.10
11.1.26	146529	DM - DMY in RN with serifs	33.10
11.1.27		DM - uncut digit	33.10
11.1.28	140212	DM - French letters for month	33.11
11.1.29	140023	DM - MDY, month RN sans serif	33.11
11.1.30	140081	DM - taller than earlier	33.11
11.1.31	159413	SN - Narrow numerals	33.11
11.1.32	1100	SN - Four digits	33.11
11.1.33	140132	SN - Closed "4" variety	33.11
11.1.34	154984	SN - Open "4" type	33.11
11.1.35	145201	RN - Small star before value	33.12
11.1.36	156829	RN - Large star before value	33.12
11.1.37	145242	RN - Star inverted	33.12
11.1.38	148419	RN - Government frank, *.00	33.12
11.1.39	143338	RN - POSTAGE PAID PERMIT	33.12
11.1.40		TM - Postal station included	33.12
11.1.41	145005	TM - Heavy printed letters	33.12
		AD - Postage due	
11.1.42		TM - PORT RETOUR PAYE	36.6
11.2	140991	Basic type	33.13
11.2.1		TM - PORT DE RETOUR PAYE	33.13
11.2.2		TM - RETURN POSTAGE PREPAID PORT DE RETOUR PAYE	33.13
11.2.3	152943	TM - RETURN POSTAGE PREPAID	33.13
11.2.4	144485	DM - DMY sans serif	33.13
11.2.5	155848	DM - DMY - with serifs	33.13
11.2.6	155985	TM - Province abbreviated, with periods	33.13
11.2.7	155795	TM - Province abbreviated, no periods	33.14
11.3	155953	Basic type, 0.00	33.14
11.4	146124	Basic type	33.14
11.4.1	146124	TM - CITY PROVINCE SPECIMEN	33.14
11.4.2	152626	TM - Province abbreviated, with period	33.14
11.4.3	143377	RM - Fractional value	33.15
11.4.4	152625	INSPECTION DEPARTMENT	33.15
11.5	51010	Basic type - .01	33.15
11.5.1	51002	TM - No P.O. in townmark	33.15

11.6	145778 Basic type - *.1:	33.16	
11.6.1	146124 TM - No town or province	33.16	
11.6.2	145776 DM DMY	33.16	
11.6.3	145776 RM - Fractional value	33.16	
11.7	143003 Basic type - .01	33.16	
12.1	9922 Basic type - NPM 9922	37.14	
12.1.1	VOID SPECIMEN	37.14	
12.2	9923 Basic type - NPM 9923	37.14	
12.3	40007 Basic type - CC 40000+	37.14	
12.3.1	40012 TM - RETURN POSTAGE PREPAID	37.14	
12.3.2	40140 TM - CANADA for province	37.14	
12.3.3	40196 TM - period after province	37.15	
12.3.4	40013 TM - province abbreviated	37.15	
12.3.5	40073 TM - Abbreviated, no periods	37.15	
12.3.6	40009 TM - omitted	37.15	
12.3.7	40196 DM - small year numbers	37.15	
12.3.8	40015 DM - blank	37.15	
12.3.9	40012 DM - blank for "7"	37.15	
12.3.10	40200 RM - 5 wavy lines after rate	37.16	
12.3.11	40006 RM - Government frank	37.16	
12.3.12	40016 SN - "No" inverted	37.16	
12.3.13	40171 SN - Dash missing	37.16	
12.3.14	40078 TM - Province misspelled	37.16	
12.3.15	PERMIT 1 POSTAGE/PAID/PERMIT	37.16	
	40074 TM - Double circle townmark	44.4	
13.1	240049 Basic type, PB - DM 240000	35.13	
13.1.1	00000 TM - CITY PROVINCE SPECIMEN, MDY	35.13	
13.1.2	00000 TM - CITY PROVINCE SPECIMEN, DMY	35.13	
13.1.3	TM - RETURN POSTAGE PREPAID	35.13	
13.1.4	TM - PORT DE RETOUR PAYE	35.13	
13.1.5	240262 TM - Province abbreviated, no period	35.13	
13.1.6	240123 DM - Blank	35.13	44.1
13.1.7	240283 DM - DMY month in RN	35.13	
13.1.8	240428 DM - DMY - "0" for day	35.13	
13.1.9	240716 RM - Gear marks below "N" of CANADA	35.13	
14.1	243152 Basic type, PB - DM3	35.15	
14.1.1	257627 TM - RETURN POSTAGE PREPAID	35.15	
14.1.2	TM - PORT DE RETOUR PAYE	35.15	46.2
14.1.3	242905 TM - Province abbreviated, with period	35.15	
14.1.4	258721 TM - Province abbreviated, no period	35.15	
14.1.5	242905 RM - Two gear marks below CANADA	35.15	
14.1.6	246663 TM - TM and DM blank	35.16	
14.1.7	242685 DM - Blank	35.16	
14.1.8	243099 DM - DMY, month RN	35.16	
14.1.9	243520 DM - DMY, "0" for day	35.16	
14.1.10	DM - MY	35.16	
14.1.11	249256 SN - Closed "4"	35.16	
14.1.12	264060 SN - Thinner number font	35.16	

14.1.13	244050	TM - Smaller letter font TM - SPECIMEN	35.15 6.5
15.1	102	Basic type	40.13
15.2	108	Basic type	40.13
15.2.1	122	RN - Value 5 mm	40.13
15.2.2	122	RN - Value 4 mm	40.13
15.2.3	220	RN - Value 3 mm	40.13
15.3	N30	Basic type	40.13
16.1	1	Basic type	40.14
17.1	149201	Basic type - PB - RFT, 149201, 149900+	30.5
17.1.1	149995	TM - Province abbreviated	30.5
17.1.2	149996	TM - Blank	30.5
	149201	TM - Town, Province, CANADA	
	149997	TM - Province abbreviated, no period	
18.1	156120	Basic type, PB - RT 7	42.11
18.1.1	156033	TM - RETURN POSTAGE PREPAID	42.11
18.1.2	156124	TM - PORT DE RETOUR PAYE	42.11
18.1.3	156012	TM - Province abbreviated, with period	42.11
18.1.4	156055	TM - Province abbreviated, no period	42.11
18.1.5	156047	TM - Blank	42.11
18.1.6		DM - "0"	42.11
18.1.7	156019	SN - Slim numbers	42.12
18.1.8	156154	SN - Open "4" type	42.12
18.1.9	156044	DM - blank	42.12
18.1.10	156078	DM - RN sans serif	42.12
18.1.11	156111	RN - Fractional value	42.12
18.1.12	156120	RN - Large star before value	42.12
18.1.13	156043	RN - Dots spaced 2.5 mm apart	42.12
18.1.14	156066	DM - month in letters	42.14
18.1	156034	RM - no colon after value	48.15
18.2	156259	Basic type, PB 5360	42.13
18.2.1	156280	TM - Province abbreviated, with period	42.13
18.2.2	156086	RM - Dots narrow spaced	42.13
18.2.3	156246	SN - Open "4"	42.13
18.2.4	156086	SN - Slim numerals	42.13 46.7
18.2.5	156265	RM - Fractional rate	42.13
18.2.6	156226	TM - P.O. in townmark	42.13
18.2.7	???	TM - Province abbreviated, no periods	42.14
18.2.8	156255	TM - heavy letters	42.14
18.2.9	156278	TM - RETURN POSTAGE PREPAID	46.6
18.2.10	156209	DM - blank	46.6
18.2.11	156213	TM - blank	46.6
18.2.12	156268	DM - sans serif	46.6
18.2.13	156265	DM - "0" for day	46.7
18.2.14	156206	RM - One dot after value	46.7
18.2	156209	DM - blank	48.15
18.3	163040	Basic type, PB 163000 - 163099	42.15

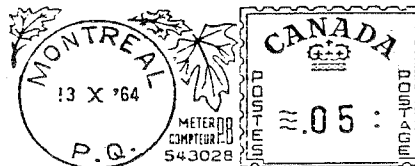
18.3.1	163030 DM - DMY "0" for D	42.15
18.3.2	RM - Decimal rate	42.15
18.3.3	163015 TM - Province in full	42.15
18.3.4	163045 DM - blank	46.7
18.3.5	163062 TM - blank	46.7
18.3.6	163108 TM - prov in full	46.7
18.3.7	163108 RM - New style triad	46.7
19.1	100103 Basic type - P 100101 - 100105	32.13
19.1.1	----- TM - CITY PROVINCE SPECIMEN	32.13
19.2	100124 Basic type - P 100106 - 100170	32.13
19.2.1	100122 SN - Larger font	32.13
19.2.2	100140 SN - Round "0"	32.13
19.2.3	100109 Gear marks at right	32.13
19.2.4	100025 SN - Small narrow font	32.13
19.3	100211 Basic type	32.14
19.3.1	100137 RM - No dot before value	32.14
19.3.2	401005 SN - Small font	32.14
19.3.3	100226 Gear marks at right	32.14
19.3.4	401002 TM - Province abbreviated	32.14
19.3.5	100241 DM - tall month	32.14
19.3.6	100202 TM - SPECIMEN	32.14
19.3.7	100211 DM - DMY	32.15
19.3.8	100805 RM - Period below value	32.15
19.3.9	01384 TM - CFPO, 5 digit SN	32.15
19.4	100602 Basic type, P 100571 - 100830	32.15
19.4.1	100708 TM - Province abbreviated	32.15
19.4.2	RM - Value - 000, no dot	32.15
20.1	540017 Basic type, PB 540000	43.10
20.1.1	000000 TM - CITY PROVINCE SPECIMEN	43.10
20.1.2	543289 TM - RETURN POSTAGE PREPAID	43.10
20.1.3	541556 TM - Province abbreviated, with dot	43.10
20.1.4	541064 TM - Province abbreviated, no dot	43.10
20.1.5	540442 DM - no day	43.10
20.1.6	546039 DM - Blank	43.10
20.1.7	543774 SN - Open "4" style	43.11
20.1.8	542703 RM - Fractional rate	43.11
	TM - VILLE PROVENCE	6.4
	501123 TM - Postal code in townmark	41.3
20.2	560001 Basic type	43.12
20.2.1	000000 TM - CITY PROVINCE SPECIMEN	43.12
20.2.2	555458 TM - RETURN POSTAGE PREPAID	43.12
20.2.3	567301 TM - Province abbreviated, with period	43.12
20.2.4	585872 TM - Province abbreviated, no period	43.12
20.2.5	560111 DM - No day	43.12
20.2.6	566509 DM - blank	43.12
20.2.7	544786 SM - Open "4" type	43.13
20.2.8	555672 RM - No dot before value	43.13
20.2.9	550760 TM - Sub-postoffice included	43.13
20.2.10	559541 AD - Postage due use	43.13

20.2.11	570932	TM - error in name	43.13
20.2.12	000000	QUALITY CONTROL TEST	43.13
20.2.13		Piece of die showing	43.13
20.2.14	572735	TM - FMO in townmark	43.14
20.2.15	564509	4 gear mark at left	43.14
	500732	TM - CFPO off-centre	41.7
20.3	630674	Basic type, 630000	43.15
20.3.1	630184	4 gear marks at left	43.15
20.3.2	500262	TM - RETURN POSTAGE PREPAID	43.15
20.3.3	631343	TM - Province abbreviated, with period	43.15
20.3.4	501123	TM - Postal code included	43.15
20.3.5	500732	TM - CFPO	43.15
20.3	576821	TM - Error in spelling	7.4
20.3	677060	SN - Tall letter font	
20.4	520275	Basic type, 520000	43.16
20.4.1	520196	TM - Province abbreviated, with period	43.16
20.4.2	520048	DM - no day	43.16
20.4.3	520361	DM - "0" for day	43.16
20.4.4	520314	RM - Decimal rate	43.16
21.1	300047	Basic type 300000	45.9
21.1.1	300001	TM - Province abbreviated, with period	45.9
21.1.2	300365	TM - single circle	45.9
21.1.3	000000	TM - CITY PROVINCE SPECIMEN	45.9
21.1.4	300511	DM - blank	45.9
21.1.5	300461	RM - No triad at right	45.9
21.1.6	300589	TM - RETURN POSTAGE PREPAID FRAIS DE PORT PAYE	45.9
21.1.7	300336	SM - Round "0"	45.10
21.1.8		RM - Fractional rate	45.10
21.1	300137	TM - Part of town name removed	7.4
21.1	300498	RM - no dot	48.2
21.1	300162	TM - RETURN POSTAGE PREPAID	48.2
22.1	320676	Basic type, 320000	45.11
22.1.1	000000	TM - CITY PROVINCE SPECIMEN	45.11
22.1.2	000000	TM - TOWN PROVINCE SPECIMEN	45.11
22.1.3	321539	TM - Province in full	45.11
22.1.4	322110	TM - Omitted	45.11
22.1.5	321390	DM - day omitted	45.11
22.1.6	321878	RM - No dot before value	45.11
22.1.7	320416	3 gear marks at left	45.12
22.1.8	321665	3 feed marks at right	45.12
22.1.9	320058	DM - die shows	45.12
22.1	000000	TM - CITY PROVINCE ONT. -- SPECIMEN	48.2
22.1	320066	Feed marks - 2 on left, 3 on right	48.2
22.1	321701	DM - dash for month	48.3
22.1	321440	TM - town name off-centre	48.3
22.1	322291	TM - circle broken at right	48.3
22.1	320552	TM - province in full	48.3
22.1	320119	SN - wide "o"	48.3
22.1	321778	SN - new font	48.3
22.1	322167	DM - blank	48.3

23.1	351754	Basic type, 350000	45.13
23.1.1	000000	TM - CITY PROVINCE SPECIMEN	45.13
23.1.2		TM - CITY PROVINCE SPECIMEN	45.13
23.1.3	350581	TM - no period after prov	45.13
23.1.4	351626	TM - omitted	45.13
23.1	351109	TM - Name spelled wrong	41.15
23.1	351754	RETURN POSTAGE PREPAID	48.4
23.1	351754	TM - blank	48.4
23.1	351754	DM - blank	48.4
24.1	360009	Basic type, 360000	45.14
24.1.1	0000000	TM- CITY PROVINCE SPECIMEN	45.14
24.1.2	000012	TM - CITY PROVINCE	45.14
24.1.3	361524	SN - Font "6" smaller	45.14
24.1.4	360632	TM - RETURN POSTAGE PREPAID	45.14
24.1.5	360957	DM - blank	45.14
24.1.6	360325	RM - Narrow triad at left	45.14
24.1.7	360108	SN - Large font	45.15
24.1.8	360053	16 gear marks	45.15
24.1.9	360801	SN - Round top "6"	45.15
24.1.10	360449	TM - Province in full, small font	45.15
24.1.11	360010	RM - Wide space between rate and right frame line	45.15
24.1		TM - Postal code in TM	
24.1	360060	2 feed marks of 10, left of TM	48.4
24.1	351333	2 feed marks of 14, left of TM	48.4
24.1	360272	RM - no dot after value	48.4
24.1	000000	CITY PROVINCE -- SPECIMEN	48.4
25.1	380017	Basic type, 380000	45.16
25.1.1	380793	TM - CITY PROVINCE	45.16
25.1.2	0000000	TM - CITY PROVINCE SPECIMEN(US)	45.16
25.1.3	381023	DM - blank	45.16
25.1.4	380029	TM - RETURN POSTAGE PREPAID	45.16
25.1.5	380034	2 feed marks at left	45.16
25.1.6	380067	RM - Government frank	45.16
25.1	380954	TM - Inverted	34.9
25.1		DM - Error	
25.1	-----	CITY PROVINCE	48.4
25.1	361361	TM - province in full	48.5
25.1	370031	TM - province abbr, no period	48.5
25.1	370009	TM - province in full	48.5
25.1	380933	DM - blank	48.5
25.1	380725	TM - omitted, also DM	48.5
25.1	390320	TM - no DM	48.5
25.2	370028	Basic type, 370000	45.17
25.2.1	370028	RM - Decimal rate	45.17
25.2	360124	Maple leaf to rt of indicia	48.4
26.1	330651	Basic type, 330000	45.17
26.1.1	333456	TM - No townmark	44.5
26.1.2	0000000	TM - CITY PROVINCE SPECIMEN (US)	45.17
26.1.3	335073	SN - Large font	45.17
26.1	0000000	CITY PROVINCE -- SPECIMEN	48.6
26.1	333555	TM - omitted, DM only	48.6

26.1	331720	TM - province abbreviated, no period	48.6
26.1	331450	TM - error in spelling	48.6
26.1	330203	TM - small type font	48.6
26.1	336990	New type font	48.6
26.1	331591	New type font	48.6
27.1	385123	Basic type, 385000	45.18
27.1	385026	No side bars on indicia	48.7
27.1	385017	Smaller font	48.7
27.1	385137	4 gear marks at left	48.7
27.1	385231	TM - province abbr., no period	48.7
27.2	389018	4-bank meter, decimal rate	48.7
28.1	800183	Basic type, 800000, 660000	46.10
28.1.1	000000	TM - CITY PROVINCE SPECIMEN	46.10
28.1.2	839264	TM - RETURN POSTAGE PREPAID	46.10
28.1.3	662730	SN - 660000 block	46.10
28.1.4	800011	TM - blank	46.10
28.1.5	807695	TM - spelling error	46.11
28.1.6	806719	TM - inverted	46.11
28.1.7	860956	TO - off centre	46.11
28.1.8	680616	AD - Postal directive	46.11
28.1	810174	DM - equal sign left of day	48.7
28.1	817327	TM - omitted	48.7
28.1	654030	DM - month in letters	48.7
28.1	845813	TM - error in spelling	48.7
28.1	677036	New type font	48.7
28.2	881140	Basic type, 881000	46.12
28.2.1	881993	TM - RETURN POSTAGE PREPAID	46.12
28.2	881197	DM - "0" for day	48.7
29.1	-----	Basic type, Hasler, 2000000+	47.8
29.1.1	-----	TM - SPECIMEN ONLY	47.8
29.1		TM- SPECIMEN	47.8
29.1.2		TM - BLACKENED	47.8
29.1.3		TM - postal code in TM	47.8
29.1.4	2005827	TM - blank	47.8
29.1.5	2002245	TM - error in name	47.9
29.1.6	2005550	TM - province with period	47.9
29.1.7	2000811	TM - province, 2 letter code	47.9
29.1.8	2006210	RETURN POSTAGE PREPAID	47.9
29.1.9	-----	RETURN POSTAGE PREPAID PORT DE RETOUR PAYE	47.9
29.1.10	2005328	VALUE - 0.00	47.10
29.1.11	2004990	VALUE - 0.00:, decimal value	47.10
29.1.12		VALUE - 00.00:	47.10
29.1.13		DM - 0.M.Y month RN	47.10
29.1.14		DM - --M.Y month RN	47.10
29.1.15	2008089	DM - MDY	47.11
29.1.16	2004778	DM - M 0 Y	47.11
29.1.17	2002121	DM - blank	47.11
29.1.18	2004894	Serial - H 2 mm, numbers 1.5 mm	47.11
29.1.19	2004105	Serial - H and numbers same size	47.11
29.1.20		TM - 26 x 18 mm	47.12

29.1.21	2004872	DM - M - Y	47.12
30.1	200053	Basic type, 200000	48.12
30.1.1	00000	CITY VILLE PROVINCE PROVENCE	48.12
30.1.2	200137	DM - Y.M ==	48.12
30.1.3	200549	TM - omitted	48.12
30.1.4	200466	RM - Tall font in value	48.12
30.1.5	200137	RM - Decimal rate	48.13
31.1	0220650	Basic type, 0220000	48.13
31.1.1	0221332	TM - Province in full	48.13



National Research Council,
Ottaw 2, Canada.

ATTENTION: G.G. Watters,
Purchasing Agent.

TOWN NAMES

DOLLARD-DES-ORMEAUX QUE 380509

I was privileged to be selected as a winner of prize A in an Official Sweepstake. The letter stated I was the winner of \$833,337.00. There was no "x" opposite the box stating the cheque had been mailed to me. I still haven't received it. By extending my subscription to TIME I was also eligible for \$1,000,000. Remember the old song - I Wonder Where the Money Went!

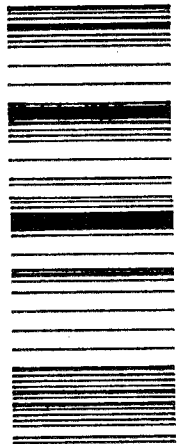
The above is introductory to describing the cover shown here. The reverse has all the imperative statements "Express Mail", "Urgent", "Rush Priority" and "Confidential Documents Enclosed". The cover was sent by Ad-mail at Bulk Rate. The check mark "x" for hand delivery meant the postman dropped it at the door. The front includes a phoney bar code. The value was potential \$3,500,000. So, I renewed my subscription to TIME - where is my money?



TURBO



E5870TC9770



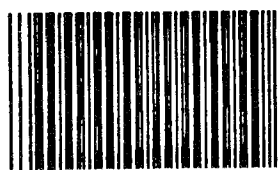
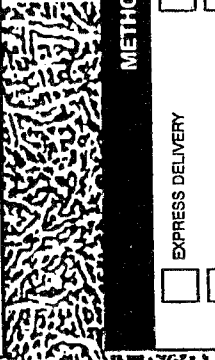
FROM:

Dorothy Addeo
Publishers Clearing House
Adelaide Street
P.O. Box 1140
Toronto, Ontario M5C 2K6

TO:

R Irwin
903 24 Marilyn Dr
Guelph ON N1H 8E9
D
18

**CONFIDENTIAL
DOCUMENTS ENCLOSED**
Tampering with this envelope
is unlawful and punishable by
fines, imprisonment, or both.



MAIL POSTE
Canada Post Corporation / Canadian Post
RN # 2956330-00
Publishers Clearing House
GATEWAY

DATED MATERIAL
REPLY REQUESTED BY
10/6/97

METHOD OF SERVICES

- EXPRESS DELIVERY
- 9 AM DELIVERY
- HAND DELIVERY
- OVERNIGHT DELIVERY
- SUNDAY DELIVERY
- HOLIDAY DELIVERY

- DANGEROUS GOODS (EXTRA CHARGE)
- DRY ICE
- FOAM PACKING
- EXTRA PACKING

WEIGHT: Less than 80 Grams
VALUE: potential \$3.5 Million

15.15

POST OFFICES IN THE NORTH WEST TERRITORIES AND THE YUKON

TOWN	CODE	METER	TOWN	CODE	METER
.KLAVIK	X0E 0A0	NWT	ARCTIC BAY	X0A 0A0	NWT(B)
ALERT		NWT	BROUGHTON ISLAND	X0A 0B0	NWT(B)
ARCTIC RED RIVER	X0E 0B0	NWT	CAPE DORSET	X0A 0C0	NWT(B)
BAKER LAKE	X0C 0A0	NWT	CLYDE	X0A 0E0	NWT(B)
CAMBRIDGE BAY	X0E 0C0	NWT	EUREKA	X0A 0GA	NWT(B)
CHESTERFIELD INLET	X0C 0B0	NWT	FROBISHER BAY	X0A 0H0	NWT(B)
COPPERMINE	X0E 0E0	NWT	GRISE FIORD	X0A 0J0	NWT(B)
CORAL HARBOUR	X0C 0C0	NWT	HALL BEACH	X0A 0K0	NWT(B)
DISCOVERY		NWT	IGLOOLIK	X0A 0L0	NWT(B)
ESKIMO POINT	X0C 0E0	NWT	ISACHSEN	X0A 0M0	NWT(B)
FORT FRANKLIN	X0E 0G0	NWT	LAKE HARBOUR	X0A 0N0	NWT(B)
FORT GOOD HOPE	X0E 0H0	NWT	MOULD BAY	X0A 0P0	NWT(B)
FORT LIARD	X0G 0A0	NWT	NANISIVIK	X0A 0X0	NWT(B)
FORT MCPHERSON	X0E 0J0	NWT	PANGNIRTUNG	X0A 0R0	NWT(B)
FORT NORMAN	X0E 0K0	NWT	POLARIS	X0A 0Y0	NWT(B)
FORT PROVIDENCE	X0E 0L0	NWT	POND INLET	X0A 0S0	NWT(B)
FORT SIMPSON	X0E 0N0	NWT	PORT BURWELL	X0A 0T0	NWT(B)
FORT SMITH	X0E 0P0	NWT	RESOLUTE	X0A 0V0	NWT(B)
GJOA HAVEN	X0E 1J0	NWT	SANIKILUAQ	X0A 0W0	NWT(B)
HAY RIVER	X0E 0R0	NWT	BEAVER CREEK	Y0B 1A0	YT
HAY RIVER VALE ISLAND	X0E 1G0	NWT	CANCROSS	Y0B 1B0	YT
HOLMAN	X0E 0S0	NWT	CARMACKS	Y0B 1C0	YT
INUVIK	X0E 0T0	NWT	CLINTON CREEK	Y0B 1E0	YT
LUPIN	X0E 1M0	NWT	DAWSON	Y0B 1G0	YT
NORMAN WELLS	X0E 0V0	NWT	DESTRUCTION BAY	Y0B 1H0	YT
AULATUK	X0E 1N0	NWT	ELSA	Y0B 1J0	YT
PELLY BAY	X0E 1K0	NWT	FARO	Y0B 1K0	YT
PINE POINT	X0E 0W0	NWT	HAINES JUNCTION	Y0B 1L0	YT
PORT RADIUM	X0E 0X0	NWT	MAYO	Y0B 1M0	YT
RAE	X0E 0Y0	NWT	OLD CROW	Y0B 1N0	YT
RANKIN INLET	X0C 0G0	NWT	PELLY CROSSING	Y0B 1P0	YT
REPULSE BAY	X0C 0H0	NWT	ROSS RIVER	Y0B 1S0	YT
SACHS HARBOUR	X0E 0Z0	NWT	SWIFT RIVER	Y0A 1A0	YT
SANIKILVOO	X0E 0W0	NWT	TAGISH	Y0B 1T0	YT
SNOWDRIFT	X0E 1A0	NWT	TESLIN	Y0A 1B0	YT
SPENCE BAY	X0E 1B0	NWT	WATSON LAKE	Y0A 1C0	YT
TUKTOYAKTUK	X0E 1C0	NWT	WHITE HORSE	Y1A 2B0	YT
TUNGSTEN	X0H 0A0	NWT	WHITEHORSE	Y1A 2B0	YT
WHALE COVE	X0C 0J0	NWT	IQUALUIT	?	NWT
WRIGLEY	X0E 1E0	NWT			X
YELLOWKNIFE	X1A 1C0	NWT			

Above is a listing of post offices in the Yukon and North West Territories. I am sure I have missed some as they often have a short life. This is the result of an enquiry in Meter Stamp Society Newsletter regarding post office above the Arctic Circle. My study was to see how many have used a postage meter. Can you add offices or meter towns to this list?

