

Again, the editor is behind the theoretical eight ball trying to get this newsletter out to you. The articles presented here are the last for a while from here. The reasons for this are multiple but boil down to having little time to spare for philatelic pursuits and a new opportunity which has been presented by other meter specialists to keep interest in our study area alive. As outlined below the editor will continue to welcome correspond with some of you and distribute at his leisure interesting stuff now and then. However, at this point you the members are stuck with selecting to go in one of two directions: join a new non-affiliated society or select a new editor and continue. I will not attempt to suggest which is best but do offer some insights from the middle. No further financial contributions for postage etc. will be needed as anything from me now will be just for fun folks.

PHILOMETRIST ASSOCIATION

One of our members, Mr. Yvon Legris is attempting to catalyse a new association interested in either or both of meters and permit mail. Its main stated objective is "the promotion of the study and collection of meter impressions and permit imprints." A french chapter called Les Mecanoteliste has 40 members and has operated (quietly) since August 1985. As a french speaking meter collector I would have been interested in joining. A quarterly bulletin will be published Mr. Legris says in a flyer I am sure you all have now received. Emphasis will be on Canada, market developments, new issues, changes in rates and policies, and aspects of specialized fields.

This is an interesting development which the editor essentially welcomes. May I offer a few suggestions:

PEER REVIEW - published research articles should be well researched and reviewed by other collectors prior to release. This is the policy of the CMSG Newsletter and would be useful to the new Association. It will also permit elimination of the significant number of errors and violations of copyright material exemplified by Mr. Legris catalogue which appeared last year. Poor research is one matter but use of other people's ideas and copyright photographs from other publications is regrettable. The point being the best material should be circulated in the interest of maintaining credibility and collector respect.

DUPLICATION - the new Association is a good idea but it is a direct duplication of the CMSG. Hence, in the interest of fair play let's encourage Mr. Legris to give it a good try. If in 6 months the new Association is nowhere, I will be pleased to revitalize the CMSG if one of you has not already done so. In my experience, only about 40 meter collectors in North America specialize sufficiently in Canada to warrant any kind of meter group. Affiliation with the Postal History Society of Canada has been useful as a start up

vehicle for funds and publicity. It also provides an umbrella of respectability. The new Philometrist Association is attempting to follow the route of the Meter Stamp Society which requires a verily large basic group to justify sophisticated mailings, etc. I personally doubt this exists here. The major aspect that strikes me is communication to french speaking collectors. Does Mr. Legris intend to publish in both languages? The CMSG offered this in an early newsletter but to date only one article has been submitted in french and published in french. The editor would like to encourage both languages in Canadian meter collecting and would like to see any material written on Canadian meters in french.

AUCTIONS - Mr. Legris indicates the new Association will have auctions. The CMSG has offered this at least 3 times and has distributed mail sale lists occasionally. All have met indifference it appears. Mr. Legris attempts here even last year went nowhere.

NEWSLETTER-Four times a year according to Mr. Legris. At an annual fee of \$7.00 this should barely cover the costs of postage (\$1.40), envelopes (1.00), paper (1.00) and photocopying(\$2.50). Good luck. Don't even think about word processing.

OK? Enough gripping. I personally am sending Mr. Legris \$7.00 and will wait to see what happens. If you are really interested in meters (or permits) do so as well: Yan Philatelic, 6700 Langelier blvd, Montreal H1M2C5).

SPECIMENS

Ed Lapham notes he has several items of industrial trials discussed in newsletter 17. He suggests the one illustrated and belonging to Wilf Whitehouse is a trial design for the PB Model RT and RF (Irwin Type 11).

POST OFFICE REGULATIONS

Ernest Roscoe has written a wonderful article comparing US and Canadian regulations. This is gleaned from copies of the boring Canada Post material sent out to a few of you in the fall. If anyone wants a photocopy of Ernest's article please send me a SASE with 34 cents in Canadian postage and I will send it along or you can read it in Stamp Collector Feb. 1 /86, pp. 22-23 and Feb. 15/86, pp. 16. It is entitled "Yes to Meters, Canadian Post Office Authorized Metered Mail in 1923" and "Meter Made, Meter Useage in Canada Differs From That in the US".

CONTEST (sorry no prize)

What is the shortest, and the longest, town name in a Canadian meter impression? What is the maximum number of letters in a Canadian townmark which may include the town, postal station and province?

ADDITIONS TO THE CANADA TOWN LIST

BC ATLIN
QUATHIASKI COVE

MAN CRYSTAL CITY
ETHELBERT
NEWDALE

NS MILL VILLAGE

ONT EARLTON
FORMOSA

PQ HAUTERIVE-SAC
NEWPORT
ST-CAMILLE
STE-EMILIE-DE-
L'ENERGIE
ST-FREDERIC
ST-LAZARE
VILLAGE

SASK CLIMAX

+ +

Please report any new U.S. and Canada towns to:
Alan Draves, P.O. Box 2009, Cridersville OH 45806.

Please include the EXACT spelling of town as shown in the town circle, and
meter number (if legible) in all reports.

+ +

Mr. Draves has been a consistent and reliable contributor of these
townmark updates for 5 years now. The editor thanks him for this
and appreciates the help.

SPECIMEN INDICIA

Ernest Roscoe notes that the --- ornament on the specimen item
illustrated in newsletter 17(pp.5) has been used by PB in the USA
in particular on Large Eagle indicia (Simon-Walsh FB type). He
indicates there was no consistent useage or pattern of meter number
useage. Erenest kindly sent a 1937 example for Utica N.Y.

POST OFFICE METERS

Three following pages are contributed by Ross Irwin. A "final" list
with corrections at the end. I guess this will go on forever....?
Our thanks for another valuable contribution.

COMPARISON OF METER INDICIA CANADA-USA

Also included with this newsletter is a 7 page comparison of indicia
types used in Canada and the USA for Irwin meter types and Simon-Walsh
catalogue types. Thanks again to Ross Irwin. Look also for an upcoming
article on government meters in the Canada n Philatelist by Ross.

LISTING OF P.O. POSTAGE METERS

| Serial | TOWN NAME |
|--------|-----------------------------------|
| 51009 | OTTAWA ONTARIO 1945 |
| 51010 | OTTAWA ONTARIO 1944 |
| 94007 | MONTREAL QUEBEC 1941 |
| 94023 | TORONTO ONTARIO 1944 |
| 94028 | TORONTO ONTARIO 1944 |
| 94039 | TORONTO ONTARIO 1940 |
| 94040 | TORONTO ONTARIO 1940 |
| 94040 | MONTREAL QUEBEC 1940 |
| 94046 | TORONTO ONTARIO 1938 |
| 94047 | MONTREAL QUEBEC 1938 |
| 94048 | OTTAWA ONTARIO 1937 |
| 94054 | TORONTO ONTARIO 1952 |
| 94057 | TORONTO ONTARIO 1950 |
| 94062 | SAINT JOHN NEW BRUNSWICK 1951 |
| 94067 | OTTAWA ONTARIO 1951 |
| 94068 | TORONTO ONTARIO 1951 |
| 94075 | TORONTO ONTARIO 1949 |
| 94119 | TRURO NOVA SCOTIA 1948 |
| 140189 | NORTH BATTLEFORD SASK. 1962 |
| 140201 | TORONTO ONTARIO 1952 |
| 140209 | TIMMINS ONTARIO 1953 |
| 140209 | POSTAL STN. B MONTREAL P.Q. 1966 |
| 140256 | HALIFAX N.S. |
| 140256 | NIAGARA FALLS ONTARIO 1959 |
| 140261 | LETHBRIDGE ALBERTA |
| 140262 | |
| 140263 | CHARLOTTETOWN P.E.I. 1948 |
| 140264 | VICTORIA B.C. 1959 |
| 140265 | NEW WESTMINSTER B.C. |
| 140266 | NORTH BATTLEFORD SASK. 1965 |
| 140294 | NEW WESTMINSTER B.C. |
| 140499 | NEW WESTMINSTER B.C. 1947 |
| 140654 | VANCOUVER B.C. 1957 |
| 143110 | LLOYDMINSTER SASK. 1963 |
| 143306 | MONTREAL QUEBEC 1960 |
| 143367 | WINDSOR ONTARIO 1967 |
| 143370 | LONDON ONTARIO 1958 |
| 143370 | LONDON ONTARIO 1958 |
| 143370 | NEW GLASGOW NOVA SCOTIA |
| 143398 | KITCHENER ONTARIO |
| 143413 | HALIFAX N.S. 1971 |
| 143413 | MONTREAL QUEBEC 1959 |
| 143426 | ST. JOHN'S NFLD. 1960 |
| 143426 | TORONTO ONTARIO 1975 |
| 143427 | SUDBURY ONTARIO |
| 143429 | MONTREAL QUEBEC 1961 |
| 143469 | MONTREAL QUEBEC 1961 |
| 143493 | CHARLOTTETOWN P.E.I. 1960 |
| 143495 | ST. LAURENT MONTREAL P.Q. 1961 |
| 143495 | MONTREAL QUEBEC 1956 |
| 143529 | MONTREAL QUEBEC |
| 143535 | PORTAGE LA PRAIRIE MAN. 1963 |
| 143560 | BRANDON MANITOBA 1974 |
| 143581 | KITCHENER ONTARIO 1960 |
| 143581 | KITCHENER ONTARIO 1960 |
| 143590 | LETHBRIDGE ALBERTA 1959 |
| 143603 | MONTREAL QUEBEC |
| 143613 | WILLOWDALE ONTARIO 1972 |
| 143613 | SARNIA ONTARIO |
| 143654 | VICTORIA B.C. 1962 |
| 143662 | HAMILTON ONTARIO 1954 |
| 143670 | STATION T TORONTO ONT. 1961 |
| 143676 | KITCHENER ONTARIO 1964 |
| 143677 | EDMONTON ALTA. 1956 |
| 143684 | HALIFAX NOVA SCOTIA |
| 143684 | POSTAL STN. D OTTAWA ONT. 1962 |
| 144087 | LINDSAY ONTARIO |
| 144220 | FORT WILLIAM ONTARIO 1956 |
| 144229 | PRINCE ALBERT SASK. 1963 |
| 144229 | YORKTON SASK. 1972 |
| 144777 | CORNWALL ONTARIO 1952 |
| 144777 | NEW GLASGOW N.S. 1965 |
| 144777 | HALIFAX N.S. 1971 |
| 144814 | SASKATOON SASK. 1963 |
| 144814 | GUELPH ONTARIO 1968 |
| 144872 | ORILLIA ONTARIO 1961 |
| 145202 | QUEBEC QUEBEC 1959 |
| 145202 | KITCHENER ONTARIO 1972 |
| 145235 | MEDICINE HAT ALBERTA 1956 |
| 145236 | QUEBEC QUEBEC |
| 145236 | MONTREAL QUEBEC 1962 |
| 145241 | NEW WESTMINSTER B.C. 1954 |
| 145247 | VANCOUVER B.C. 1956 |
| 145248 | PRINCE ALBERT SASK. 1952 |
| 145248 | WINNIPEG MANITOBA |
| 145249 | LONDON ONTARIO 1959 |
| 145257 | VERNON B.C. 1952 |
| 145355 | VANCOUVER B.C. 1957 |
| 145366 | KELOWNA B.C. 1963 |
| 145371 | ST. THOMAS ONTARIO 1971 |
| 145379 | GUELPH ONTARIO 1958 |
| 145382 | VANCOUVER B.C. 1951 |
| 145382 | DAWSON CREEK B.C. 1965 |
| 145393 | TRURO NOVA SCOTIA |
| 145408 | TORONTO ONTARIO 1964 |
| 145434 | OTTAWA ONTARIO 1956 |
| 145441 | YARMOUTH N.S. 1962 |
| 146133 | NELSON B.C. 1962 |
| 146134 | ROSEMONT MONTREAL P.Q. 1962 |
| 146134 | MONTREAL QUEBEC 1960 |
| 146137 | OUTREMONT MONTREAL P.Q. 1983 |
| 146138 | |
| 146139 | VANCOUVER B.C. 1956 |
| 146139 | POSTAL STATION A VANCOUVER B.C. |
| 146139 | OUTREMONT MONTREAL P.Q. |
| 146140 | QUEBEC QUEBEC 1963 |
| 146140 | MONTREAL QUEBEC 1962 |
| 146140 | LETHBRIDGE ALBERTA |
| 146141 | TORONTO ONTARIO 1956 |
| 146142 | |
| 146143 | SOUTH BURNABY VAN. B.C. 1962 |
| 146144 | PEMBROKE ONTARIO 1964 |
| 146144 | MONTREAL QUEBEC 1958 |
| 146144 | NOTRE-DAME-DE-GRACE MONTREAL P.Q. |
| 146145 | NEW GLASGOW NOVA SCOTIA |
| 146146 | SAULT STE MARIE ONTARIO 1956 |
| 146147 | |
| 146148 | WINDSOR ONTARIO 1974 |
| 146148 | TORONTO ONTARIO 1952 |
| 146149 | WINDSOR ONTARIO 1976 |
| 146189 | POSTAL STATION 'A' VANCOUVER B.C. |
| 146261 | ROCK ISLAND QUEBEC 1963 |

146280 PRESTON ONTARIO 1962
 146331 KITCHENER ONTARIO
 146401 REGINA SASK. 1974
 146401 EDMONTON ALTA. 1956
 146402 TORONTO ONTARIO 1953
 146403 TORONTO ONTARIO 1953
 146404
 146405 DOWNSVIEW ONTARIO 1968
 146406 TORONTO ONTARIO 1953
 146407 PENTICTON B.C. 1955
 146408
 146409 KAMLOOPS B.C. 1955
 146410 GLACE BAY N.S. 1960
 146411 CRANBROOK B.C.
 146411 HAMILTON ONTARIO 1966
 146412 VERDUN MONTREAL P.Q. 1962
 146412 MONTREAL QUEBEC 1959
 146413 NANAIMO B.C. 1954
 146413 MONTREAL QUEBEC
 146414 CALGARY ALBERTA 1967
 146414 CRANBROOK B.C. 1953
 146415 LINDSAY ONTARIO 1965
 146415 TORONTO ONTARIO 1952
 146416 TRAIL B.C. 1954
 146417
 146418 MONTREAL QUEBEC 1956
 146418 REGINA SASK.
 146419 CORNER BROOK NFLD. 1958
 146420 ISLINGTON ONTARIO
 146421 VANCOUVER B.C.
 146422 NORTH VANCOUVER B.C. 1954
 146423 TORONTO ONTARIO 1962
 146424 VANCOUVER B.C.
 146425
 146426 MONTREAL QUEBEC 1957
 146426 OUTREMONT MONTREAL P.Q. 1964
 146427 SUDBURY ONTARIO 1962
 146427 MONTREAL QUEBEC 1968
 146428 MONTREAL QUEBEC 1967
 146428 DELORIMIER MONTREAL P.Q. 1964
 146429 MONTREAL QUEBEC 1959
 146429 CALGARY ALBERTA 1958
 146429 ISLINGTON ONTARIO 1968
 146430 TORONTO ONTARIO 1959
 146433 ST. JOHN'S NFLD. 1954
 146436 VANCOUVER B.C.
 146437 VICTORIA B.C. 1958
 146437 VANCOUVER B.C. 1963
 146438 REGINA SASK.
 146438 VANCOUVER B.C. 1954
 146439 CALGARY ALBERTA 1958
 146440 VANCOUVER B.C. 1957
 146441 ST. THOMAS ONTARIO 1979
 146441 MONTREAL QUEBEC 1955
 146441 TORONTO ONTARIO
 146442
 146443 CHARLOTTETOWN P.E.I. 1964
 146443 HALIFAX-DARTMOUTH N.S. 1959
 146444 DRUMMONDVILLE QUEBEC 1957
 146460 TORONTO ONTARIO 1953
 146613 KINGSTON ONTARIO 1966
 146830 WINDSOR ONTARIO
 146833 TORONTO ONTARIO
 146839 GALT ONTARIO
 146896 GUELPH ONTARIO 1954
 146899 GALT ONTARIO 1962
 146901 CHATHAM ONTARIO 1964
 146902 OSHAWA ONTARIO 1965
 146903
 146904
 146905 PEMBROKE ONTARIO 1952
 146911 MOUNT ROYAL MONTREAL P.Q. 1973
 146917 BELLEVILLE ONTARIO 1955
 146917 KAMLOOPS B.C.
 146917 TORONTO ONTARIO 1962
 146921 QUEBEC QUEBEC 1967
 146924 FREDERICTON N.B. 1964
 146928 GRANBY QUEBEC 1957
 146930 WINDSOR ONTARIO 1953
 146933 TORONTO ONTARIO 1959
 146933 NIAGARA FALLS ONT. 1965
 146934
 146935 KITCHENER ONTARIO 1956
 146936 ST. CATHARINES ONTARIO 1953
 146937 ISLINGTON ONTARIO 1961
 146938 PRESTON ONTARIO 1963
 146943 SWIFT CURRENT SASK. 1964
 146944 PEMBROKE ONTARIO 1960
 146944 MONTREAL QUEBEC
 147413 EDMONTON ALTA. 1964
 147532 FLIN FLON MANITOBA 1962
 147545 MONTREAL QUEBEC 1962
 147545 SUDBURY ONTARIO 1964
 147549 REGINA SASK. 1959
 147550 GALT ONTARIO 1972
 147550 TORONTO ONTARIO 1965
 147550 TORONTO STA. F ONT. 1970
 147552 REGINA SASK. 1959
 147560 BARRIE ONTARIO
 147565 REGINA SASK. 1972
 147568 HAMILTON ONTARIO 1962
 147568 TORONTO ONTARIO
 147568 OSHAWA ONTARIO 1957
 147570 DAWSON CREEK B.B.
 147577 SIMCOE ONTARIO 1954
 147580 SAINT JOHN N.B. 1956
 147583 RED DEER ALBERTA
 147584 MONTREAL QUEBEC 1967
 147585
 147586 HAMILTON ONTARIO 1954
 147587
 147588 FLIN FLON MANITOBA 1963
 147753 VANCOUVER B.C. 1963
 147754 MONTREAL QUEBEC 1964
 147772 MONTREAL QUEBEC 1983
 147776 EDMONTON ALTA. 1969
 148086 CAMROSE ALBERTA 1968
 148087 LINDSAY ONTARIO 1958
 148087 PETERBOROUGH ONTARIO 1969
 148089 TORONTO ONTARIO 1962
 148282 SNOWDON MONTREAL P.Q.
 148282 QUEBEC QUEBEC
 148314 SNOWDON MONTREAL P.Q. 1968
 148314 STRATFORD ONTARIO 1979
 148423 HAMILTON ONTARIO 1958
 148423 TORONTO ONTARIO 1963
 148424 TORONTO ONTARIO 1956
 148440 OAKVILLE ONTARIO 1965
 148441 PRINCE GEORGE B.C. 1962
 148442 MOOSE JAW SASK. 1963

148678 FREDERICTON NEW BRUNSWICK
 148989 TORONTO ONTARIO
 151115 MONTREAL QUEBEC 1958
 151115 MOUNT ROYAL MONTREAL P.Q. 1969
 151116 MONTREAL QUEBEC 1965
 151120 HALIFAX N.S. 1969
 151121 SNOWDON MONTREAL P.Q.
 151387 VANCOUVER B.C. 1962
 151400 VANCOUVER B.C.
 151967 SHERBROOKE P.Q. 1958
 151970 TORONTO ONTARIO 1965
 151972 YOUVILLE MONTREAL P.Q. 1971
 151974 PORTAGE LA PRAIRIE MANITOBA
 151974 STATION T TORONTO ONT.
 151974 WINNIPEG MANITOBA 1963
 151976 SNOWDON MONTREAL P.Q. 1961
 151979 TORONTO ONTARIO 1964
 151981 TORONTO ONTARIO 1962
 151982 SCARBOROUGH ONTARIO 1961
 151986 GRANDE PRAIRIE ALBERTA 1960
 151987 TORONTO ONTARIO 1967
 151990 KITCHENER ONTARIO 1969
 151990 PETERBOROUGH ONTARIO 1961
 151997 OTTAWA ONTARIO 1970
 151998
 151999
 152400 ST.LAURENT MONTREAL P.Q. 1969
 152400 CORNWALL ONTARIO 1960
 152401 MOUNT ROYAL MONTREAL P.Q. 1973
 152401 POSTAL STA. B MONTREAL P.Q. 1964
 152407 POSTAL STN.E OTTAWA ONT. 1970
 152410 POSTAL STATION B OTTAWA ONT. 1963
 152412 LONDON ONTARIO 1964
 152417 BRANTFORD ONTARIO 1965
 152418 BANFF ALBERTA 1977
 152424 DUNCAN B.C. 1975

153030 WILLOWDALE ONTARIO 1968
 153073 TORONTO ONTARIO 1960
 153074 MONTREAL QUEBEC 1961
 153075 ST.JOHN'S NFLD. 1963
 153078 VICTORIA MONTREAL P.Q. 1966
 153079 COURTENAY B.C. 1966
 153080 DAUPHIN MANITOBA 1962
 153081 STATION C HAMILTON ONT. 1972
 153082 STRATFORD ONTARIO 1970
 153084 KIMBERLEY B.C.
 153085 PLACE D'ARMES MONTREAL P.Q. 1962
 153241 YOUVILLE MONTREAL P.Q. 1980
 153343 TORONTO ONTARIO 1954
 153506 MONTREAL QUEBEC 1966
 153507 DELORIMIER MONTREAL P.Q. 1968
 153508 FORT WILLIAM ONTARIO 1961
 153510 WINNIPEG MANITOBA 1962
 153517 DOWNSVIEW ONTARIO 1960
 153518 WINNIPEG MANITOBA 1962
 153520 TORONTO STA. B ONT. 1961
 153522 ST.THOMAS ONTARIO 1965
 153523 CALGARY ALBERTA 1967
 153524 TORONTO STA. F ONT. 1965
 153775 SAULT-STE-MARIE ONTARIO

154060 POSTAL STN. E OTTAWA ONT.
 154551 MONTREAL QUEBEC 1962
 154655 ST.LAURENT MONTREAL P.Q. 1963

154736 BARRIE ONTARIO 1965
 154864 QUEBEC QUEBEC 1963
 155201 ST.CATHARINES ONT. 1980
 155319 POSTAL STN. E OTTAWA ONT. 1973
 155601 MONTREAL QUEBEC 1968
 155619 POSTAL STN. E OTTAWA ONT. 1978
 155734 BRANTFORD ONTARIO 1976
 156225 PLACE D'ARMES MONTREAL P.Q. 1980
 156747 NEW WESTMINSTER B.C.
 157233 DELORIMIER MONTREAL P.Q. 1980
 158277 MONTREAL QUEBEC
 158694 SAULT-STE-MARIE ONTARIO 1978
 159813 ST.CATHARINES ONT. 1980

Corrections to above
 94023 - is this not 94028????
 delete duplicate 143370 and 143581
 spelling - St. Catharines
 add:-
 151987 SHERBROOKE P.Q.
 146420 TORONTO ONTARIO

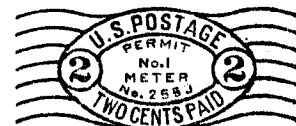
COMPARISON OF POSTAGE METER INDICIA

Ross W. Irwin

Postage meters used in Canada were primarily of US manufacture. This means that the actual space provided for the indicia must be the same regardless of the indicia design. Below, is a comparison of the indicia designs as used for particular postage meters so a visual comparison may be made. The code number is: Irwin catalog number/Postage meter model/Simon-Walsh catalog number. Please note that direct comparisons are arbitrary in some cases.



1.2
M
CA



5.1
HF
DB1/2/3



6.1
HF
DB1/2/3



5.1
H3
DB10/11.



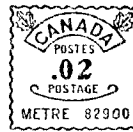
6.1
H3
DB10/11



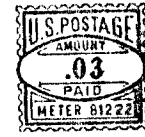
5.1
HS
DB9



7.1
HT
DEL



7.2
HT
DE2



7.3
HT
DE3



7.1
HX
DEL



7.2
HX
DE2



7.3
HX
DE3



7.4
CA
DF1

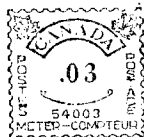


7.5
CA
DF2





8.1
CV
DF5



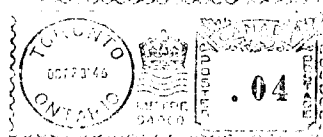
8.2
CV
DF6



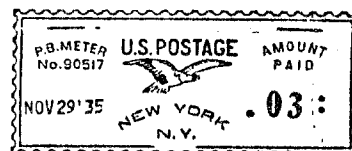
8.4
CA
DF3



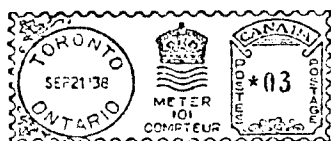
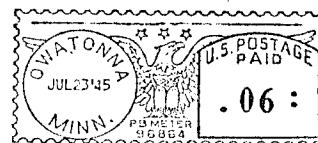
8.3
CV
DF7



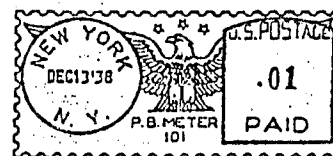
9.1
J
FA



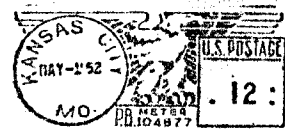
9.2
JD
FB

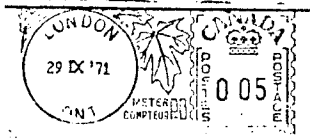


10.1
Coin-O-Post
Mail-O-Mat
M(FC) 1

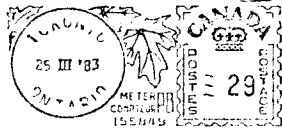


11.1
RT/RF
HA3

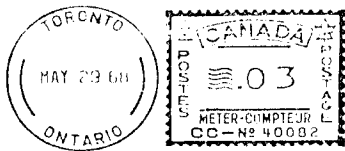
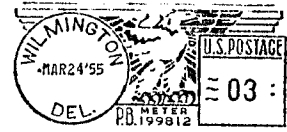




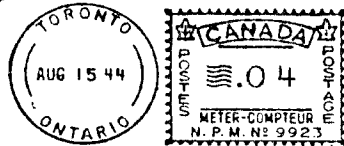
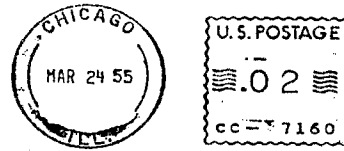
11.3
RT/RF
HA11



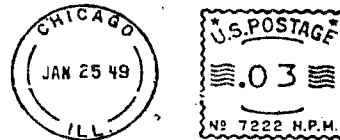
11.2
RT/RF
HA4A



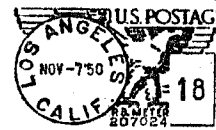
12.3
45
GCL



12.2
45
GA4



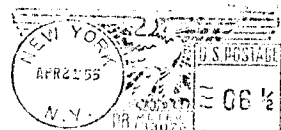
13.1
DM
HB4



14.1
DM3
HB4

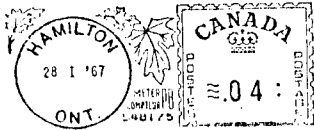


18.1
RT7
HA5

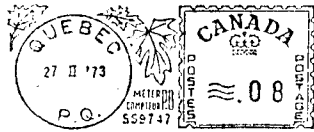


18.3
RT7
HA10A

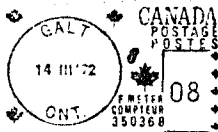
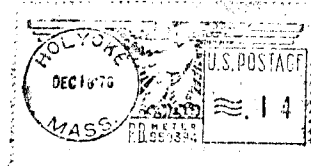




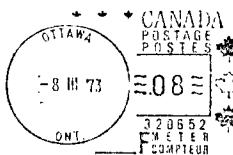
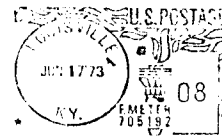
20.2
5307
HC1



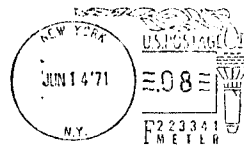
20.1
5306
HC4



21.3
9205
KD1



21.2
9225
KB1



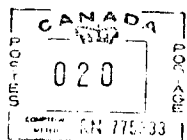
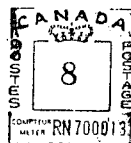
21.1
PM4C
KA2

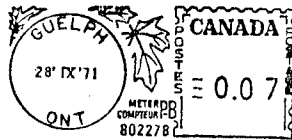


21.4
9235
KE2

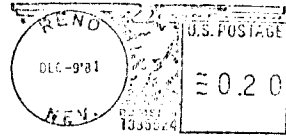


22.1
105





23.1
5711
HD2



MILITARY LIST

Finally got it typed up and this is now enclosed for a last time. This kind of listing will be subject to many updates and additions but someone else will have to keep track.

GOVERNMENT METERS

I've been accumulating a good box of this stuff by Department and want to clean it out of my basement. I will send it anyone seriously interested and who will write an article about them. Period is 1940-60 and 1980's in general. One more thing - if you want it you pay the postage - about \$7 in Canada and \$20 to USA (rough estimate). C. Rubec, 488 Athlone Ave, Ottawa, Ontario, K1Z 5M8.

AND FINALLY

Many thanks to all of you for your contributions and material, ideas and suggestions. The CMSG was envisaged as a members group dependent on input. I've enjoyed your letters and considerably appreciate your friendship. Perhaps this will continue at a later date but it seems time now to let someone else take a go at it.

Cheers!!

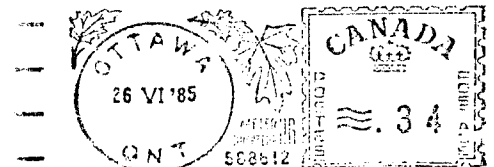
Clayton Rubec
Ottawa
March 31, 1986

FILLER

A Brian Baloney Meter:

PRIME MINISTER — PREMIER MINISTRE
OTTAWA K1A 0A2

OFFICE OF THE PRIME MINISTER
CASINET DU PREMIER MINISTRE
K1A 0A2



IN SEARCH OF POSTAGE METER IMPRESSIONS

Ross W. Irwin

Over the years I have always found a fertile source of meter impressions, particularly those of the specimen variety, has been at the major business machine shows.

Postage meters have been a back-burner interest with me for a number of years, but filled with new enthusiasm I decided to take in the National Business Show at Toronto. It was held at the CNE grounds on a very wet day. I should have stayed at home.

It turned out that if you were not interested in computers and software there was little else at the show. Apparently Pitney-Bowes has not taken part for some years, Postalia was listed in the original program but failed to attend. Only Hasler and Canada Post was present.

So, for the expense of attending I obtained the two specimens shown here.

With so little to see I spent quite a bit of time with International Mailing Systems Ltd., the Canadian distributor of the Swiss Hasler postage meter systems. Their basic mailing machine is Model 307B which prints tapes or envelopes. It does not seal envelopes.

The next larger mailing machine is Model 307BS and does the same as the Model 307B but also seals and feeds the envelopes through the machine - up to 999 at one time.

The largest machine is the Model 307AS4PS which stacks, seals, and stamps 200 covers a minute, of almost any size.

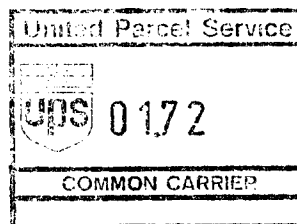
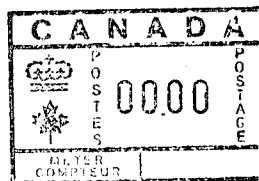
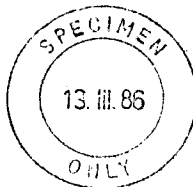
The postage meter associated with these mailing machines is quite interesting. The model numbers are tabulated below.

| USPS Model | Canadian Model | Maximum Stamp | Maximum Setting |
|------------|----------------|---------------|-----------------------|
| 9610/9210 | 4310 | 9.99 | 99,900.00 |
| 9710/9310 | 5410 | 99.99 | 99,900.00 |
| 9763/9363 | 5463 | 9.99 dec. | 9,990.00 |
| | | | 99,900.00 (new model) |
| 9513/9113 | 2413U (UPS) | 99.99 | 99,900.00 |

The UPS register can be changed to postage meter operation very quickly; however, the Post Office sets the meter and a UPS salesman collects postage on a regular basis at the point of meter use.

The postage meter indicia, as shown, in 4-bank which infers it can print to \$99.99. This is not always the case. The 3-bank postage meter uses the 4-bank indicia but the initial digit is always a "0". The maximum value for the Model 4310 would read "09.99". The fractional meter was not at the show. Note that the UPS indicia is larger.

Master/Multimaster
The Franking System.



My town list is not up to date. These may have been reported.

DELBURNE ALTA 843934
COALDALE ALTA 584868

ARCHERWILL SASK 818321

DU BON CONSEIL QUE 750028

FMO HALIFAX NS 818310

BUCTOUCHE NB 554115
FREDERICTON JUNCTION NB 862036
RIVER GLADE NB 845641
STANLEY NB 807007
YOUNGS COVE ROAD NB 864453 (poor copy, can't tell if 's

COMFORT COVE - NEWSTEAD NFLD 650093
GOOSE AIRPORT NFLD 544461
TOPSAIL NFLD 817667
HAWKES BAY NFLD 547706

Ross W. Irwin