

---

CANADA METER STUDY GROUP  
NEWSLETTER

NO. 15

APRIL 1985

---

Well with the arrival of spring a meter newsletter seemed useful despite the amount of other painting and yard work there is to do. This one is brief as very little seems to be afoot. Cards and letters always are appreciated. Thanks to Ross Irwin for several articles included herein.

MEMBERSHIP

Welcome to a new participant in the CMSG:

Mr. Luc Legault  
8400 Neuville No.39  
Anjou, Quebec  
HIJ IX2

Wishes to exchange material and  
information in particular.

MILITARY LIST

To follow up this issue is a typed version of the Canada Military List of Meters. It is far from "complete" and has entries only up to about 1980 stressed. This represents CMSG Misc. Publication No.2. Particular thanks to Wilf Whitehouse for many additional notations.

MORE ON MEISEL

Ed Lapham notes Meisel had a knack for getting meter companies to produce strange varieties for him, but the Simon USA catalogue refers only to these as "fabrications" and "machination". However, most were used to actually pay postage. He refers us to an article in MSS Bulletin No. 172/173 and 174 "The Meisel Cinderellas". Ross Irwin notes the AMPS had meetings for the purpose of building up membership. The first was at the Prince Edward Hotel in Windsor Oct.25/63; a second at the North Palmer Hotel, Windsor on Mar.30/64. Ross says nobody attended these meetings since Meisel likely used them as an excuse for related business. Some Canadian members included NO. 161 - H. Gordon, Montreal; 213 - L.M. McLennan, Hamilton; 239 - A. Colden, Toronto; 438 - T. Keller, Woodstock; and 520 - R. Irwin, Guelph. Ross says he was a member from 1957-63 and about all he got from it was a thick file of Newsletters.

CHANGE OF ADDRESS

D. Crotty has moved to 31 Woodside Dr.  
Pleasant Ridge, MI  
USA 48069-1042

NEW DESIGNS

Dave Cooper advises us to keep our eyes open for new Postalia and Friden meters this fall so keep some spaces there.

## PRISONER OF WAR POSTAGE METERS

Ross W. Irwin

The Pitney Bowes Model HS postage meter was approved for use October 6, 1931. This single rate meter was originally intended to replace the single rate Model M postage meter. It had many drawbacks and technology passed it by - few wanted a single rate postage meter.

Two Model HS postage meters were placed in service prior to 1943. These occur with Irwin Type 5 and Type 6 indicia. The serial block 48007 to 48010 was assigned to this small group. The Type 6 indicia had been introduced in 1934.

Canada agreed to keep German and Italian prisoners of war from the African campaign for the British government. It had been proposed that such a concentration of prisoners in England might be dangerous should they escape. About 35,000 POW's were maintained in Canada.

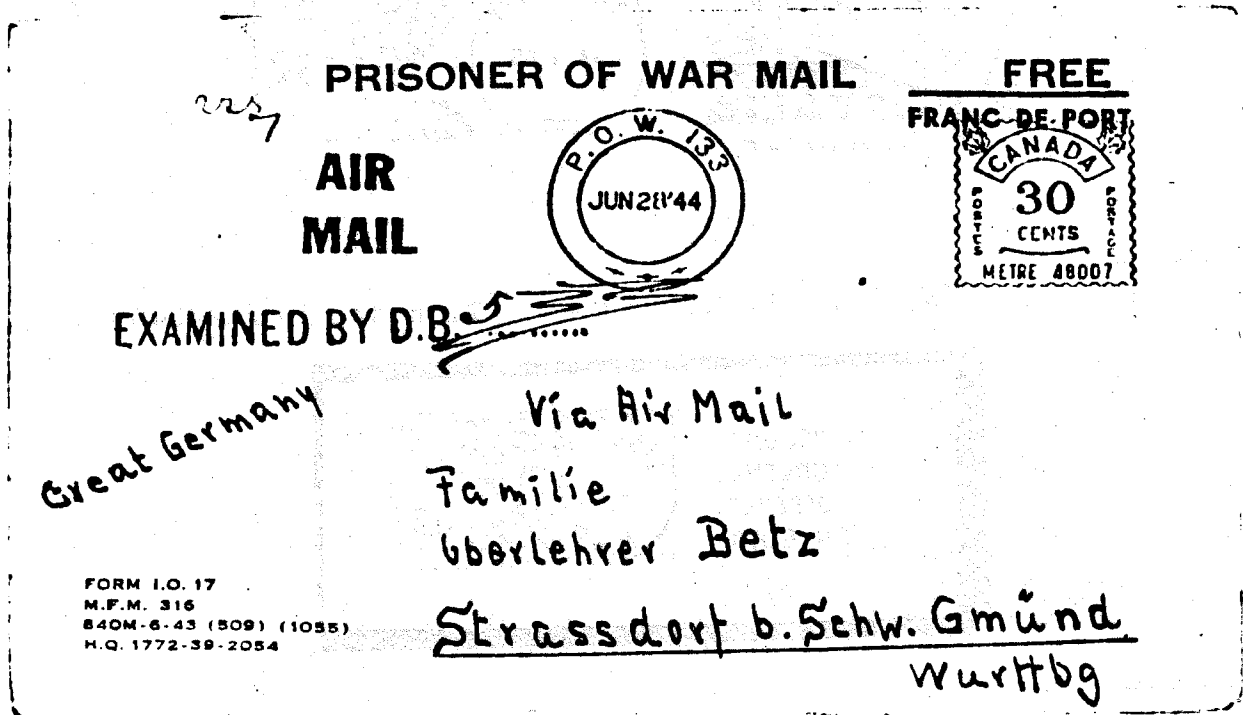
An airmail rate of 30¢ was established for POW mail. POW's were not permitted to prepay their mail with postage stamps as there was thought to be some danger in them writing secrets on the back of the stamp. Censors applied the stamps. This was unsatisfactory, due to work load, and postage meters were adopted in three internment camps as a security measure.

Prisoner of War Internment Camp No. 133 was opened at Lethbridge, Alberta, in January, 1943, and housed 12,500 German other ranks. The camp was closed June 30, 1946, although some sources give an official date of January 15, 1947. Pitney Bowes Model HS, single rate postage meter, serial 48007, was placed in service in December, 1943 and was removed in December 1945. This postage meter was later revalued to 1¢ and used by the H.E. Fenn Co., Toronto. This is the most common cover.

Postage meter 48009 was used at POW Internment Camp No. 132 at Medicine Hat, Alberta. This camp opened in May 1943 and the postage meter was in use from December 1943 to July 26, 1945. This postage meter had very little use.

Postage meter 48008 was used at POW Internment Camp No. 23 at Monteith, Ontario. This postage meter was in use from December, 1943, until December 6, 1945. The camp was officially closed January 15, 1947.

All covers are of Type 6.1.7 with a single prepaid airmail rate of 30¢. The indicia townmark has the letters "P.O.W." and the number of the internment camp. At the bottom are three fancy markings. All reported covers bear the postal directive AIR MAIL, in two lines. Covers tend to be on POW letter forms and bear an "Examined by D.B." censor stamp.



POSTALIA ILLUSTRATIONS

Illustrated below thanks to D. Cooper and R. Irwin are two recent Postalia items: A German specimen card and Thunder Bay Ontario Postalia meter with German slogan.



**Das POSTALIA - Franklermaschinen - System**

Handmodell

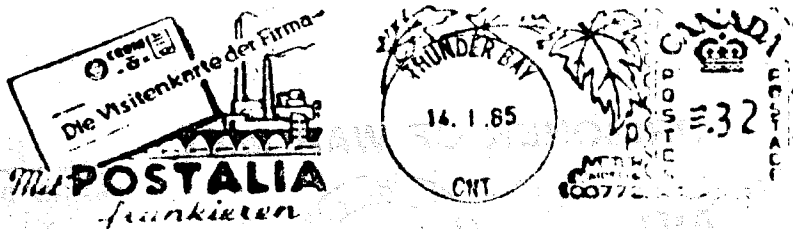
Elektrik „Standard“

Elektronik

Automatik

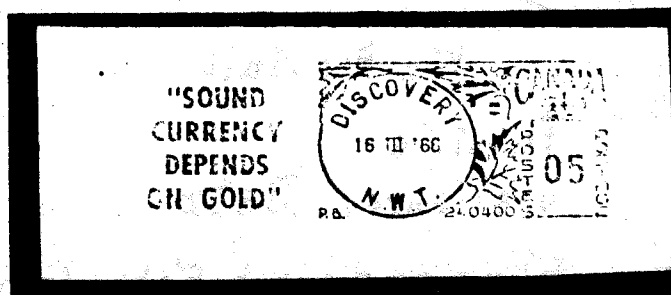


POSTALIA GMBH · 605 Offenbach am Main 1 · Postfach 130



DISCOVERY

An unreported meter town is Discovery NWT, meter no. 240400 in 1966.



EXPO 67 METER SLOGANS

I suppose this has been covered elsewhere but it was interesting to see a display in Montreal several months ago of 50 Expo 67 meter covers featuring 40 different slogans attached to that great event.

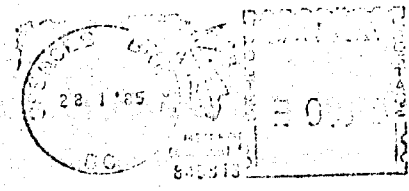
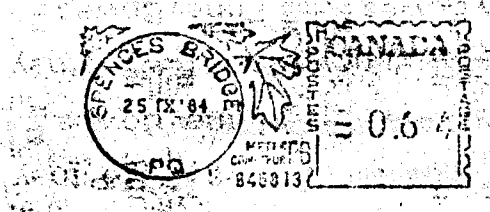
METER BOXES

In a recent newsletter the existence of blue meter only mail boxes in Victoria was noted. Ernest Roscoe says these have been common in the USA but has wanted a photograph of one of these for some time. Perhaps anyone in Victoria or a US city in the future could send Ernest a snap of one.

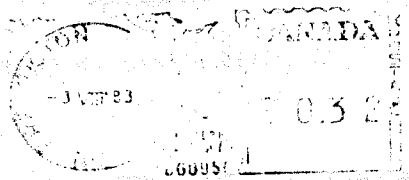
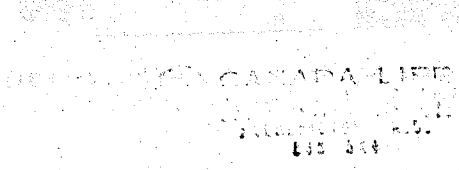
ERRORS AND ODDBALLS

Here's two more

- (1) Spences Bridge BC used a meter reading PQ from Sept 84 to Jan 85. (W. Whitehouse)



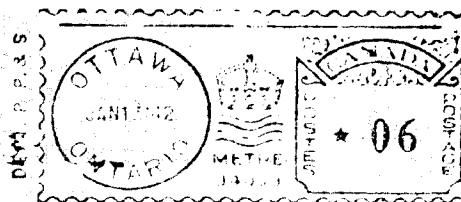
- (2) FREDERICTON NB - why is it displaced off centre - what was deleted?



ELUSIVE ITEM

Here's a nice example of Irwin Type 9.2.3 used on a Dept. of Public Printing and Stationery, Ottawa OHMS envelope on Jan 13'42.

O. H. M. S.



## NEWFOUNDLAND POSTAGE METERS

Ross W. Irwin

Newfoundland postage meters, particularly those of good quality, are very scarce. Many exist with poor inking making the deciphering of the serial number impossible. The following table gives some other clues as to the scarcity of these meter impressions.

To March 31,	Value of postage stamps sold	Other postage collected
	\$	\$
1942	566,343.00	39,184.00
1943	471,026.47	47,948.63
1946	684,997.00	55,914.00
1947	714,139.51	49,740.39
1948	797,083.73	61,084.00
1949	762,791.25	99,229.97*

\* This value was a reflection of the "increased use of stamping machines, and the increase in bulk postings".

If anyone has access to Newfoundland Public Accounts for other years I would appreciate having the values, and comments on the use of postage meters. Even as late as 1949 postage meter revenue, combined with bulk mailing, only accounted for 13 percent of postage.

Our combined resources may not be adequate but I would like to try to establish when each postage meter was in use in Newfoundland. The attached table contains all the information I have at present. Can anyone add to this information?

With respect to Pitney Bowes Model R postage meter, Irwin Type N4 has anyone got an impression earlier than March 2, 1948?

## LIST OF NEWFOUNDLAND POSTAGE METERS

Original Nfld Serial Number	Final Date Known to be in Use	User Company	Second Nfld Serial	Original Canadian Serial 1949
N 1	1949	Avalon Telephone	N 1	N 1
N 2	1945	Nfld Light & Power		
N 3	1930	Great Eastern Oil Co		
N 4	1931	Harvey & Co		
N 5	1931	Imperial Tobacco		
N 6	1947	Bowring Bros.	180007	140680
N 7	1947	James Baird Ltd		
N 8	1933	Colonial Cordage	180008	
N 9	1949	Job's Stores		
N10	?	?		
N11	1930	?		
N12	1934	Standard Mfg	180003	144486
N13	1931	George Neal Ltd		
N15	1948	Nfld Railway	35504, 35502	82620
N14	1945	Sity St John's		
N16	1932	Nfld Timber		
N17	1931	Great Eastern Oil		
N18	1939	T&M Winter		144808
N19		Royal Stores		
N20	1947	Bowater's Nfld	180000	144349
N21	1933	Harvey's		
N22		Steer's		
N23	1933	Harvey's		
N24	1940	Royal Stores		
N25	1946	Bowater's Nfld		
N26		?		
N27		?		
N28		Harvey's Cornerbk	180013	144485
N29		?		
N30	1947	Royal Stores		N30
N31		?		
N32		Steer's Ltd		N32
		Canada Packers	35513	
		Browning Harvey	35501	
		Dicks & Co	180016	144494
		Gerald S. Doyle	180011	
		Nfld Butter Co	180010	
		Royal Bank	180006	144480
		Ayre & Sons	180004	1132
		F.M. O'Leary	180002	144483
		Bank of Montreal	180001	

CLASSIFICATION PROBLEMS

The editor has received several photocopies of items that are hard to pick out in either Irwin or Legris catalogues. These are the many government meters under Irwin types 55 and 56 in particular. If someone has the time could you splice together a few pages for publication with illustrations of each type listed since many are really very much different and possibly in need of ~~more~~ distinct classification. Pick the list of your choice and we'll circulate it in the Newsletter for comment.

W. Whitehouse sends us the illustration below of a combined Irwin 3.2 and 3.4 slugs used on the same cover. Obviously in early meter types with fixed slug values this could be expected but nice examples are rare I think.



The Egg-O Baking Powder Company Montreal, P. Q.  
HAMILTON, ONT.

No.

4320

Before heading north to Baffin Island in July the editor will try to circulate another Newsletter. See you then friends.

METER REGULATIONS

It was suggested we reprint current meter usage and servicing regulations. For those interested however the editor refers you to the Canada Gazette, available in most public libraries or if desired I will send you a photocopy of Chapter 1286: Servicing Regulations and Fees; and Chapter 1287: Manufacture Approvals, Changes in Design, Delivery, Loss, Theft, Inspection, Destruction, etc. See pp: 10437-10447 and a 1981 amendment (Canada Post Corp.) Part II, Vol.115. No.20 pp. 3070. Lots of neat definitions and industry related information.