



The Grey, Bruce, Dufferin & Simcoe

POSTAL HISTORY STUDY GROUP

No. 4 • Vol. 1, No. 4

OCTOBER 1998

The "Year" in Review!

[REF. 034]



It is hard to believe that this is Issue N° 4 and what a "year" it has been. Three of us started back in January thinking about a regional study group and what it would take to make it go! We would have been happy with eight or nine members but instead we are so fortunate to have attracted 34 members. Not only that but many of you have been willing to share your part in the hobby with others and that makes it very special. Major articles (the authors are listed with such in the Table of Contents), have been submitted by 5 of you not only once but twice. Thank you. Much of your research and collections have also been shared with me, allowing me to dip in and pick and choose to fill our pages which with this issue will come up to 34. There is so much material out there that it has been decided to go to six issues per year at 10 pages each. Many of you have spoken to me about that, none have objected. Our new publishing schedule is on the next page.

The downside of all this is that with Issue N° 5 we will begin our "second" year and that dues are due for most of you. *If the number on your mailing list ends in "-4", please pay \$10 for the next six 10-page issues.* The other part of the number is your membership number, thus 001-4.

So if you feel you have got value for your money, you will renew today!!

Meaford Franchise closes!

[REF. 035]

The Mac's Milk franchise (012645), Sykes St. South, N4L 1X1, that has been operating since February 1998 will close on Monday August 10, 1998. Meaford will now only have postal service provided by Canada Post on Trowbridge St. Canada Post Meaford diversified on Oct. 5, 1987 by establishing RPO 1 (405388) at the former Zehr's store, NOH 1Y0. This RPO was in existence only until May 31, 1988. On March 23, 1990 a new franchise, Meaford RO (012645), was opened at the Becker's Store, N4L 1P3. This franchise moved to the Mac's Milk Store in February, 1998, and will now close. The two franchises, Becker's and Mac's utilised the same POCN number, however the cancels were different. (see page 2 for illustrations)

CONTENTS – ISSUES 1 TO 4

	REF NO.	PAGE NO.	
N° 1	Open Letter to Fellow Postal Historians	001	1
	Chesley Wartime Economy Cover	002	1
	Owen Sound Priority Courier Cancel 053430	003	1
	Warton Corner Card	004	1
	The Post Office at Camperdown [J. Knierim]	005	2
	CNR RPO Hamilton & Meaford (postmark)	006	3
	Stokes Bay Post Office Profile	007	3
	Letter from Collingwood (cover)	008	4
	Bruce County Post Offices (CPC stats)	009	5
N° 2	Welcome to the members of the Study Group	010	7
	Response to Item 008: Collingwood cover	R-008	7
	To Dufferin, to Dufferin We Go [J. Kraemer]	011	7
	Melancthon Cover	012	7
	A Rose by any other Name	013	7
	The Two "Adjala" Post Offices [J. Blacklaws]	014	8
	Adjala Township Post Offices	015	9
	Adjala Township (map)	016	9
	New Postal Stationery	017	9
	New POCN Cancellers: Thornbury, Warton, Meaford	018-020	9
	Response to Item 007: Stokes Bay cancel	R-007	9
	Do we Have a Post Office here: Paisley card	021	10
	Barrow Bay Post Office profile	022	10
	Letter from Bentinck (cover)	023	11
	Grey County Post Offices (CPC Stats)	024	12
Mayfair: A Question of Location	025	14	
Meaford Franchise Moves	026	14	
N° 3	Port Elgin: Post Offices on Post Cards [R. Smith]	027	15
	Trivia Quiz	028	15
	Response to Item 012: Melancthon Post Office	R-012	16
	Response to Item 022: Barrow Bay Cancels	R-022	16
	Response to Item 013: Newsletter Names	R-013	16
	Point to Ponder		16
	Postal History of Camp Borden [D. Hanes]	029	17
	The Post Office at Badjeros [J. Knierim]	030	18
	Badjeros Post Office Profile	031	19
	Cottage Inn Post Office Profile	032	20
	Response to Item 009: Bruce Cty. Post Offices	R-009	20
	Simcoe County Post Offices (CPC Stats)	033	21
N° 4	The Year in Review	034	25
	Meaford Franchise closes: 012645	035	25
	Table of Contents: Issues N° 1 - N° 4		25
	Response to Item 028: Trivia Quiz/Glencairn P.O.	036	26
	Response to item 007: Stokes Bay P.O.	R-007	26
	Politics and the Post Office: Tolmie [J. Kraemer]	037	26
	Postal History of Camp Borden [D. Hanes]	038	27
	Cedarville: Post Offices on Post Cards [R. Smith]	039	28
	Cedarville Post Office Profile	040	28
	Cedarville Cover	041	29
	Loretto, Adjala Township [J. Blacklaws]	042	30
	Loretto Post Office Profile	043	31
	GBD & S Membership List		32
	Dufferin County Post Offices (CPC Stats)	044	34

Please note that henceforth a Table of Contents will be published with each issue and a cross-referenced Index will be published annually.

Suggestions for fine-tuning our newsletter are always welcome as are your submissions no matter how large or small, important or whimsical. That postmark may be meaningless to you but may well be the cornerstone to complete somebody's research.

Late News! Ravenna just received a new POCN canceller. For this hamlet that is a rare occasion! More details next issue.

QUESTIONS & ANSWERS

Trivia Quiz

[REF. R-028 / 036]

We have a Winner! . . . Member **Lew Metzger** correctly identified our Trivia Quiz. The answer to our question "What **SIMCOE COUNTY** post office has been continuously in the same family since it was established? is **GLENCAIRN**, in Tosorontio Township, Simcoe County. Well done, Lew!

The **GLENCAIRN** office has had a heretical line of postmasters since its opening on April 1, 1865, beginning with M. N. Stephens, the first postmaster who served until 1903, Feb. 3; followed by M. N. Stephens Jr. (1903, May 1 - 1925, April 14); and Paul C. Stephens (1925, June 8 - 1964, Nov. 15). The current postmaster, Donald Luscombe Stephens, is the great-grandson of that first postmaster. He began his service on November 16, 1964. **Four generations, 133 years.**

R-007 One of the purposes of having a study group newsletter is to ferret out more information and build our pool of knowledge. Herewith we have a 1990s photo of the small **STOKES BAY** Post Office which is still operating in the summer of '98 . . . and another older **POCON** with letterspaced figures in a different font.



The sign of importance is at the side. That entrance does not indicate palatial surroundings – but the mail will get through!

PHOTO COURTESY OF
ROBT. C. SMITH COLLECTION

You *just* might be interested to what happened to your dues money!

OPENING BALANCE:	Feb. 1, 1998		\$0.00
Receipts:	Membership Dues	\$190.00	
	Donations	\$100.78	\$290.78
Expenses:	Production/Mailing of Newsletter	\$153.80	
	Other: Incid. Postage	\$15.30	\$169.10
CLOSING BALANCE:	Sept. 15, 1998		\$121.68

*This newsletter, yet to be named, is the printed forum of the **Grey, Bruce, Dufferin & Simcoe Postal History Study Group** affiliated with the Postal History Society of Canada. It is currently published 6 times a year: January, March, May, July, September and November. Copy deadline is 3 weeks before the 1st of the above-mentioned months.*

Membership costs \$10 per year (6 issues) and is payable to the editor **J. (Gus) Knierim**

RR1, Thornbury, Ontario N0H 2P0

PHONE/FAX: (519) 599-6975

Politics and the Post Office

TOLMIE Post Office

Amabel Township, Bruce County

James E. Kraemer, F.R.P.C.

[REF. 037]

Before Canada Post became a Crown Corporation on October 16, 1981, politics and patronage often had a significant part in the establishment of post offices and the appointment of postmasters. Politics were involved in the establishment and closing of **TOLMIE**, a post office in Amabel Township, Bruce County.

In the Federal election of June 23, 1896, a new party known as *The Ontario Association of the Patrons of Industry*, organized in London, Ontario, 1891, supported a number of candidates. One of these was Major John Tolmie, the Liberal candidate. He won the Bruce West riding with a 488-vote majority. (From 1882 until 1900 Bruce County was divided into three Federal ridings, North Bruce, South Bruce and West Bruce.) In the 1900 general election John Tolmie was again successful with a 632 vote plurality. Tolmie was without a seat in the election of 1903 when West Bruce became a part of North Bruce and South Bruce.

On August 19, 1906 the sitting Federal member for North Bruce, L.T. Bland died. A by-election was called for October 30, 1906 to fill the vacancy. Major Tolmie ran for the Liberals and was elected. The general election in 1908 was fought with vigour. Tolmie won with a 319 vote majority. In order to fulfil an election promise

a post office was opened by Major Tolmie 5 miles East of Sauble Beach on County Road #8. The post office was named **Tolmie** and was on the southwest corner of Lot 16, Concession 10 in Amabel Township just west of what is now the Sauble Golf Club.



The Tolmie Post Office opened on August 1, 1910 with John Robinson as Postmaster. Not all of the area residents were happy and many refused to patronize the new post office. Shortly after the opening of the Tolmie Post Office, a general election was called in 1911. Tolmie was defeated by the Conservative candidate Hugh Clark, who won by 92 votes. One of the results of the Conservative win was the closing of the Tolmie Post Office. It closed on November 13, 1911. Officially the post office was closed due to, "lack of business". The map position for Tolmie is 44°37", 81°14".

NOTE: *The author is not aware of any other cancelling devices for Tolmie. Since the Post Office opened on August 1, it must have operated several days without a Tolmie cancelling device.*

Send in a picture of that favourite Cover Postmark or Post Office!

of Camp Borden

by Dave Hanes

During the Second World War, 185,000 men passed through the training stream. About one-half of the soldiers who served overseas received some of their training here. In 1940 with the advent of the British

Commonwealth Air Training Plan, RCAF Camp Borden became *N° 1 Service Flying Training School*. During the war years, hundreds of pilots were trained to wing standards.

In 1966, the 50th birthday of the camp, the name **Camp Borden** became *Canadian Forces Base Borden* and the Base was placed under one commander.

Today, Base Borden occupies approximately 85 square kilometres and is the Armed Forces' largest centre for producing highly skilled tradesmen and officers. More than two hundred trade and career courses are taught here. Approximately 15,000 students are graduated from the base's training schools each year. **CFB Borden** has a resident population of about 10,000 service personnel and dependants.

During the summer of 1916 the first International Hub Type machine cancel was put into use at Camp Borden. Its life was short as it was used only for a period of 2 months from June 2 1916 until August 3, 1916. The second machine

shown on the card to the left was used for an relatively extended period – from August 7, 1916 until October 9, 1917.

The third machine is unique among Internationals with the radial dashes at year date and ONTARIO spelled out in full. August 4, 1916 is the earliest reported use.

[continued Issue N° 5]



The first type of postal cancel used at Camp Borden was the Field Post Office / Canada Militia cancel, which



saw limited use due to several other types of hand cancels and machines being available.

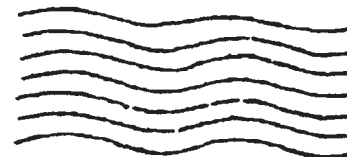
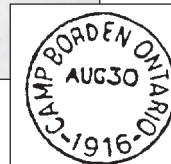
Type II International machine cancel



shown on the card to the left was used for an relatively extended period – from August 7, 1916 until October 9, 1917.

The third machine is unique among Internationals with the radial dashes at year date and ONTARIO spelled out in full. August 4, 1916 is the earliest reported use.

[continued Issue N° 5]



Type III International machine cancel

My Dear Violet:
This is a picture of the machine which fell on our parade ground last Sunday morning. Probably Mrs. P. has told you about it by now. You will like to have this as a souvenir of Camp Borden.

We are leaving here on Friday and should reach Toronto by the following Wednesday.

[signed]

For a 45-minute drive that is a long time, Camp Borden to Toronto. Did they walk . . . march?



Cedarville

by Robert C. Smith

[REF. 039] The post card illustrated here can be identified as showing the Cedarville post office only through the fact that someone has numbered all of the features in the photograph, and then provided a list of them on the back of the card. Although it was never mailed, the card also has the date October 2, 1907 written on the back. For the sake of general interest, the list is reproduced here: 1. J. Hipps house; 2. C. C. Hackridge's store; 3. Blacksmith shop; 4. Mrs Cook's house; 5. Methodist Church; 6. Post Office; 7. P.O. store room; 8. Trees in Sheers field.

The Cedarville post office was established in Proton Township, Grey County on July 1, 1861, under postmaster Thomas Rogers. The third postmaster, John Devine, was in office when this card was written, and served until his death in 1911. From that time until the post office closed on August 4, 1970, nine other people served as postmasters at Cedarville.

Frank W. Campbell, in his Canada Postmark List to 1875, records but does not illustrate a double broken circle (a "6" in his terminology) CEDARVILLE / U.C as the first postmark used at this office. I have not seen any strikes of this device. A CEDARVILLE / C.W single broken circle with manuscript date has only been recorded in use from late 1874 until early 1875, although Campbell states that he saw a strike from 1869. This device was replaced by a 20mm CEDARVILLE / ONT broken circle, proofed on April 3, 1876, and this in turn was succeeded by a 21mm broken circle with a period after ONT., proofed on October 23, 1894; this last

device has been seen on cover from April 13, 1904 to December 1, 1936.

Any help that readers can provide in extending the known dates of usage of these postmarks would be much appreciated; I can be contacted at Box 9383, Stn T, Ottawa, Ont., K1G 3V1. The dates of recorded usage cited here were taken from Bruce Graham's new listing, *Ontario Broken Circle Postmarks by County: Early and Late Usage.* ...



The Post Office is N° 6 – the second house from the right.



The second split circle hammer on a post card dated February 12, 1937.

POST OFFICE PROFILE

Cedarville, Ontario

A small Grey County farming community south of Flesherton and Dundalk
Township of Proton, Grey Cty.

MOON: N° 2486

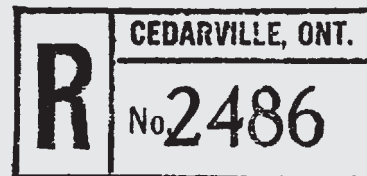
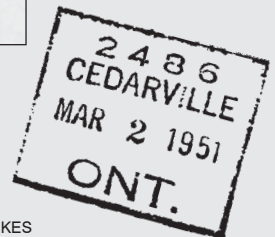
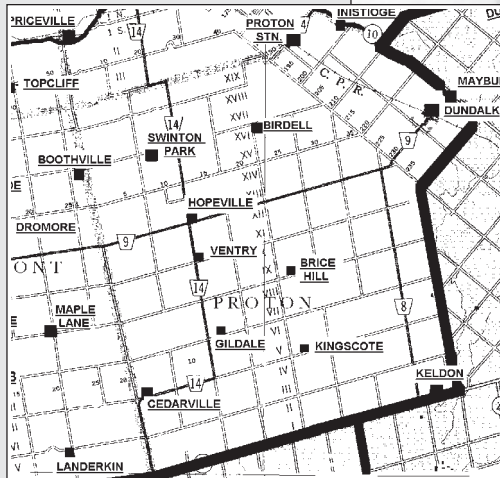
Opened: 1861, July 1

Closed: 1970, August 4

Postal Service is now provided by a Rural Route out of Mount Forest

Proton Twp., Grey County
MAP COURTESY OF Eric Manchee.

[REF. 040]





[REF. 041] This cover mailed from Cedarville to The Canadian Bank of Com[m]erce at Dundalk, Ontario took a circuitous route to get there considering it stayed within the same Township. It was sent on November 28, 1931 as a Registered Letter (note that Registration Box is different from the proof strike on the previous page). Its first transit point was Mount Forest where it was transferred to the CPR train (ORANGEVILLE & TEESWATER R.P.O. N° 1/756/NO 28/31) whence it headed towards Orangeville and there it was transferred to the TORONTO & OWEN SOUND R.P.O. N° 4/707/NO 28/31 and to arrive in Dundalk on November 28, 1931. Oh yes, all in one day – I think we need the time of day here.

The roller cancel on the front is unidentifiable. One might assume that the letter left Cedarville uncanceled and that the roller cancel was applied at Mount Forest or Dundalk – but that is sheer speculation.

In the 1931 *History of the County of Grey*, Cedarville is specifically described as one of the three villages in

the Township of Proton. “Cedarville is situated on the south branch of the Saugeen river near the town line of Egremont. There were a sawmill, grist mill and oatmeal mills operated here in early days, also two stores and a tavern. T. and W. Rogers were merchants and proprietors of the mills. John McKenzie also had a store here.”

Cedarville in July 1998. This photo is taken from approximately the same location as the post card.



Loretto

Adjala Township, Simcoe County

[REF. 042]

By Jim Blacklaws

The first postmaster at Loretto, P. D. Kelly, suggested the name (more often than not pronounced *Loretta*) for this crossroads village situated at the 6th Line and 15th Sideroad in Adjala Township. Taken from a town in Italy, the name honours “*Our Lady of Loretto*”.

Loretto was surveyed as a village in 1866, by Robert Walsh, for the registered owner, Patrick Derham. Like many early settlements it had the usual establishments necessary for the times: a general store, a blacksmith shop, post office, and a school, S.S. #4 Adjala. It also served as the seat of government for the township. Loretto’s real claim to fame, however, were its four hotels, situated one on each corner.

The post office was opened August 1, 1864. Early postmasters were Patrick Kelly, William Casserly, William Dearling, John Gamble, Maria Gamble. The earliest post office dater was the Loretto split circle with the Canada West designation. This dater was still in use in the 1880s.

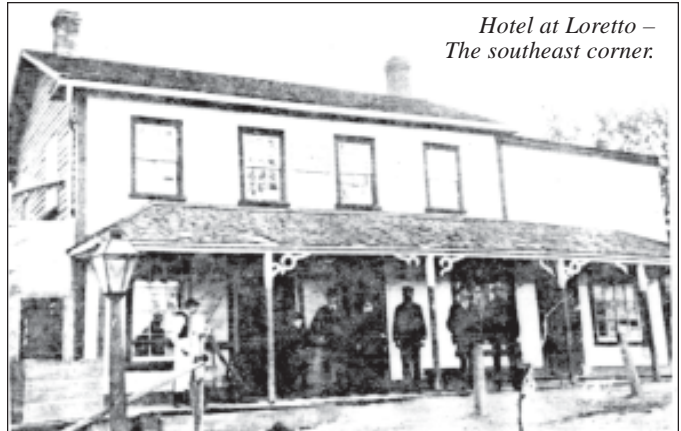
On the morning of March 21, 1935, Loretto suffered a great loss. Among others, Bill Wilson the postmaster,



Farming bee at Loretto.



First school at Loretto, S.S.#4, Adjala.



Hotel at Loretto – The southeast corner.



Barry’s Hotel, Loretto – The northeast corner.

Registered cover, postmarked LORETTO – C.W. JU 31 1879



and his family narrowly escaped their residence in Barry’s old hotel, on the northeast corner, when fire broke out in the dance hall attached to this building. At that time, the “building was the property of McCabe and Wilson who kept a general store there, had a gasoline station, a tire depot, and kept the Loretto post office in one part of the building.” In another part “of the building was the beer parlour”. Sylvester Barry and

James McCormick had been the previous postmasters, and owners of this building, which had housed the post office since 1916. A temporary site was set up in the old hotel on the southeast corner, until the Barry hotel was rebuilt.

On November 13, 1950 the store and post office at Loretto were separated from the hotel business, when Bill Wilson relocated to Kidd's old store at Athlone. Kidds had operated the Athlone post office there until it closed on August 31 of that same year. Wilson operated his store, and the post office, under the Athlone name, here until November 16, 1955, when he moved back to Loretto to a new building he had built on the southeast corner. The Loretto name was returned to the post office where it operated under Wilson and various postmasters. It closed for good in 1992. With its closing, the era of the post offices in Adjala Township ended. Loretto, and its rural routes 1 and 2, are now served out of Beeton. ☐

A Record of People Living at Loretto

SIMCOE COUNTY DIRECTORY FOR
1872

Casserty, M.J., teacher	Kennefic, Lawrence, tailor
Casserty, Win., hotel-keeper	McAnnelly, Thos., inn-keeper
Cassin, Thos., blacksmith	McCabe, Peter, farmer, merchant
Coolahan, Joseph, butcher	McCabe, Thos., farmer, merchant
Corrigan, Patrick, currier	McCullough, James, barber
Creary, John, trader	McElroy, Win., merchant
Dearling, Win., Painter	McKenna, C., M.D.
Derham, Patrick, storekeeper	McKenna, Robert, farmer
Downs, Patrick, gardener	Moran, Michael, farmer
Gamble, John, J.P., farmer	Morrow, Francis, farmer
Gamble, Win., farmer	Nevins, Alex, saloon keeper
Haffey, John, J.P., farmer	Nevins, John, farmer
Holland, Thos., blacksmith	Sweeney, Thos., farmer
Kelly, John, merchant	
Kelly, P.D., conveyancer	
Kennefic, Edw., horse trainer	

CREDITS:

Robert C. Smith's, *Ontario Post Offices*, 1988. Vol. 1 & 2
National Archives History Cards
David Williams', *The Origin of the Names of the Post Offices of Simcoe County*, 1906.
The Alliston Herald, March, 1935.
Simcoe County Directory, 1872.
Robt. A. Lee Philatelist Ltd., *Proof Strikes of Ontario*



POCON 329746



POST OFFICE PROFILE

Loretto, Ontario

A small farming community in Simcoe County southwest of Beeton

Township of Adjala, Simcoe Cty.

MOON: N^o 3509

POCON: 333263 (until 1988, May 20)
327476 (1988, May 20 - Sep. 6)
329746 (1988, Sep. 5 - 1992, Apr. 4)

Postal Code: LOG 1L0

Householder Count (December 1997)
673 [incl. 33 businesses, 50 farms; 2 RRs]

Population: 781 (1994)

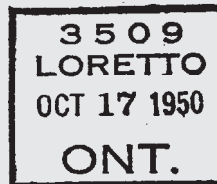
Opened: 1864, August 1

Moved to Athlone; adopted name: 1950, November 13
[The Athlone Post Office which had operated since March 6, 1853, had closed August 31, 1950]

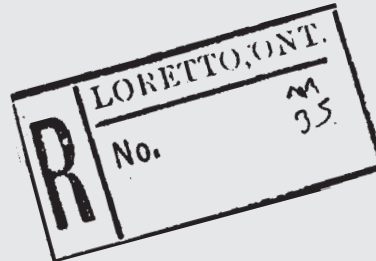
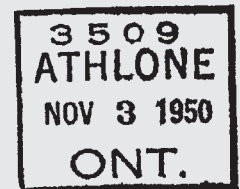
Moved back to Loretto: 1955, November 16
Closed: 1988, May 20

Re-opened as Franchise: 1988, May 20
Closed: 1988 September 6

Re-organized Franchise: 1988, September 5
Closed: 1992, April 4



PROOF STRIKES



The Proof Books do show an **ATHLONE** Registration Box, but since it is undated we can not assume that it is from the 1950-1955 period.

There are other cancels out there.
Who can report?



[REF. 043]



The Grey, Bruce, Dufferin & Simcoe POSTAL HISTORY STUDY GROUP

MEMBERSHIP DIRECTORY . . . as of Sept. 15, 1998

- Mr David Archer** [N° 020]
P.O. Box 82, MIDLAND, ON L4R 4K6
PHONE (705) 549-7921
INTERESTS: *Muskoka P.O. artifacts, Simcoe County P.O. artifacts, Midland*
- Mr Jim Blacklaws** [N° 004/PHSC 1151]
RR#2, LORETTO, ON L0G 1L0
PHONE (705) 435-6830
INTERESTS: *Postal History/Post Cards of Adjala Twp., Simcoe County. Adjala, Achill, Arlington, Athlone, Alexander, Ballycroy, Connor, Colgan, Ennis, Fintona, Hockley, Keenansville, Loretto, North Adjala, Romilly, Rosemont, Sheldon, and Lorraine (Duff. Cty.)*
- Mr John R. Chapman** [N° 027]
1090 Queen St. KINCARDINE, ON N2Z 1E7
PHONE (519) 396-8005
INTERESTS: *Bruce County*
- Mr John Cortan** [N° 025]
P.O. Box 280, RIPLEY, ON N0G 2R0
PHONE (519) 395-5817
INTERESTS: *Bruce County, (D)*
- Mr Larry Crane** [N° 026]
2633 8th Ave. A East, OWEN SOUND, ON N4K 6T4
PHONE (519) 371-7054
INTERESTS: *Grey County*
- Mr Brian Draves** [N° 023/CSDA/APS]
P.O. Box 21, Stn C, TORONTO, ON M6J 3M7
PHONE (416) 538-4443 / e-mail sunside@total.net
INTERESTS: *Grey County, (D)*
- Mr Bob Ford** [N° 017]
721 8th Ave. East, OWEN SOUND, ON N4K 3A5
PHONE (519) 376-4788
INTERESTS: *Grey County, Canada, Newfoundland*
- Mr W. Bruce Graham** [N° L013/PHSC L490]
886 Purcell Cresc., KINGSTON, ON K7P 1B9
PHONE (613) 384-8720
INTERESTS: *Broken Circle Postmarks of Ontario; Elgin and Frontenac Counties*
- Mr Bradley Green** [N° 007]
86 Birch Street, Collingwood, ON L9Y 2V1
PHONE (705) 445-3972
INTERESTS: *General postal history*
- Mr Dave Hanes** [N° 003/BNAPS]
33 Lillian Crescent, BARRIE, ON L4N 4P8
PHONE (705) 722-6316
INTERESTS: *Military; Camp Borden and Cdn Provost Corps*
- Mr Rick Hills** [N° 032/PHSC/BNAPS/CSDA]
164 Dufferin, SMITHVILLE, ON L0R 2A0
PHONE (905) 957-3100
e-mail: hillstmp@mail.com
INTERESTS: *Collector, Dealer, Literature*
- Mr Horst Kahlmeier** [N° 008]
P.O. Box 2394, Kitchener, ON N2H 6M3
PHONE (000) 000-0000
INTERESTS:
- Mr Frank Kendle** [N° 024/BNAPS]
14 Theresa Ave., NORTH YORK, ON M2M 1W5
PHONE (416) 225-4855
INTERESTS: *Grey County*
- Mr J. (Gus) Knierim** [N° 001/PHSC 1072/BNAPS/RPSC]
RR#1, THORNBURY, ON N0H 2P0
PHONE/FAX (519) 599-6975
INTERESTS: *Regional postal history for Grey, Bruce and Simcoe Counties; the Northern Districts of Ontario; Northern Canada; and postal stationery*
- Mr Jim Kraemer** [N° 015/PHSC/RPSC]
17 Commanche Dr., NEPEAN, ON K2E 6E8
PHONE (000) 000-0000
INTERESTS: *Postal history of Grey, Bruce, Dufferin, Huron, Wellington, Perth and Waterloo Counties*
- Mr Mac MacDonald** [N° 019]
RR#3, BARRIE, ON L4M 4S5
PHONE (000) 000-0000
INTERESTS: *Simcoe County*
- Mr Eric B. Manchee** [N° 028/PHSC]
2420 Rector Ave., OTTAWA, ON K2C 1M3
PHONE (000) 000-0000
INTERESTS: *Post Office Mapping Project*
- Mr William H.P. Maresch** [N° 031/PHSC/BNAPS/RPSC/CSDA]
Suite 703, 330 Bay St., TORONTO, ON M5H 2S8
PHONE (416) 363-777 FAX (416) 363-6511
www.maresch.com
INTERESTS: *Meaford and surrounding area.*
- Mr Bob McCabe** [N° 028/PHSC]
1452 River Road West, WASAGA BEACH, ON L0L 2P0
PHONE (705) 429-1946
INTERESTS: *Simcoe County*
- Mr Bill McCann** [N° 014/PHSC/BNAPS/RPSC/CSDA]
170 Dixon Road, WESTON, ON M9P 2L8
PHONE (416) 247-8745
INTERESTS: *Collector/Dealer, Booklets, Postal Stationery, Postal History*
- Mr Dan McInnis** [N° 030]
P.O. Box 2063, Stn A, SUDBURY, ON P3A 4R8
PHONE (705) 566-0293
e-mail: dan.mcinnis@sympatico.ca
INTERESTS: *Collector/Dealer, Postal History*
- Mr Lew Metzger** [N° 002/PHSC]
Box 1113 – Stn Main, BARRIE, ON L4M 5E2
PHONE (705) 721-8354
INTERESTS: *Postal History of Grey and Simcoe Counties; MOOD, MOTO, MOON, POCON cancellations*
- Mr Michael Millar** [N° 021/PHSC 4/F-RPSC/APS]
292 Shanty Bay Road, BARRIE, ON L4M 1E6
PHONE (705) 726-5019
INTERESTS: *Simcoe; Brit. Squared Circle Postmarks*
- Mr Doug Murray** [N° 000/PHSC]
P.O. Box 693, CHARLOTTETOWN, PEI C1A 7L3
PHONE (902) 569-2634 FAX (902) 569-1798
INTERESTS: *MOOD, MOTO, MOON, POCON; Prince Edward Island*
- Mr Don Nicoll** [N° 034]
RR3, HEPWORTH, ON N0H 1P0
PHONE (519) 534-1857
INTERESTS: *Grey & Bruce Counties*
- Mr Bob Pike** [N° 018]
P.O. Box 250, HEPWORTH, ON N0H 1P0
PHONE (519) 935-3803 FAX (519) 935-3828
e-mail: bob_pike@hotmail.com
INTERESTS: *General Postal History, Canada, U.S.*

Mr Reg Powell [N° 012]
 1236 Bruce County Rd. 1
 RR#2, Holyrood, ON N0G 2B0
 PHONE (000) 000-0000 FAX (000) 000-0000
 INTERESTS: *Bruce County, Kinloss Twp*

Mr Robert Prince [N° 006/PHSC/BNAPS]
 52 Rose Street, BARRIE, ON L4M 2T2
 PHONE (705) 728-3160
 INTERESTS: *Simcoe County, Dist. of Parry Sound, Canada Centennial Issue*

Mr Ed Rebel, Canada Post Corp. [N° 000/0]
 25 Trowbridge St. West, MEAFORD, ON N4L 1A0
 PHONE (519) 538-3084
 INTERESTS: *Canada Post Regional Retail Rep.*

Mr John Rossiter [N°009/PHSC]
 5 Susan Place, BARRIE, ON L4N 5P3
 PHONE (705) 726-1050
 INTERESTS: *Grey & Bruce Counties; Cdn. Reg. mail*

Ms Sue Sheffield [N°022/PHSC/MUSKOKA STUDY GROUP/BNAPS/RPSC]
 P.O. Box 67039, Meadowlark P.O., EDMONTON, AB T5R 5Y3
 PHONE (403) 444-6091 FAX (403) 481-1144
 INTERESTS: *Muskoka and area*

Mr Carleton Smith [N°033/PHSC/BNAPS/RPSC]
 261 Thorne Dr. HAMILTON, ON L8V 2M6
 PHONE (905) 389-2910
 e-mail: ccsmith@netrover.com
 INTERESTS: *Hamilton-Wentworth County, Simcoe County Postal History, R.P.O.*

Dr Robert C. Smith [N°005/PHSC]
 P.O. Box 9383, Stn T, OTTAWA, ON K1G 3V1
 PHONE (000) 000-0000
 INTERESTS: *Ontario Postal History, Ont. Broken Circle Postmarks, Ont. Post Offices on Post Cards*

Mr Robert Switzer [N° 011/PHSC]
 370 Bay Street, ORILLIA, ON L3V 3X4
 PHONE (705) 326-7674
 INTERESTS: *Postal History of Simcoe Cty. and Muskoka Dist.*

Mr Bob Vogel [N° 016/PHSC/MUSKOKA POSTAL HISTORY STUDY GROUP]
 68 Victoria Street, BARRIE, ON L4N 2H9
 PHONE (705) 739-9910
 INTERESTS: *Muskoka Postal History, Berlin/Kitchener*

Mr Carl Wright [N° 010/APS]
 44 Albert St. East, HILLSDALE, ON L0L 1V0
 PHONE (705) 835-1546
 INTERESTS: *Postal History of Simcoe County, Admiral, New Zealand*

HELP WANTED! TRADES!

SIMCOE COUNTY/ADJALA TWP. – Postal History for the following Post Offices is desired: Ennis, Achill, Adjala, North Adjala, Romilly, Lorraine, and Alexander.

Jim Blacklaws, RR#2, Loretto, Ont. LOG 1L0

MANUSCRIPT TOWN POSTMARKS – Your help is needed in compiling a list of *manuscript town postmarks* used instead of the traditional town date stamp. If you are aware of any please report to this newsletter or *David Handelman, Mathematics Dept., University of Ottawa, Ottawa, Ontario K1N 6N5.* (e-mail: dehs@uottawa.ca)

BRUCE COUNTY/KINLOSS TWP. – I am working on a postal history of Kinloss Township. All information and help would be appreciated.

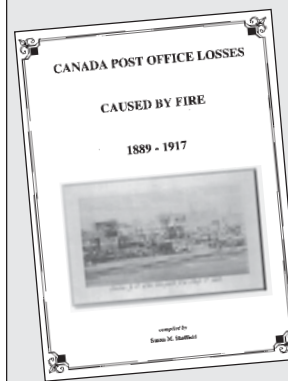
Reg. Powell, RR#2 Holyrood, On. N0G 2B0

For *maximum* enjoyment of the hobby I suggest that you share your knowledge. You will make new friends and certainly make new discoveries and in the process you will expand your own understanding. Just ask anyone that has shared their knowledge.

CANADA POST OFFICE LOSSES CAUSED BY FIRE: 1889-1917.

This 212-page, soft-covered, spiral-bound book compiled by member *Susan Sheffield* may be borrowed for the cost of 2-way postage (\$8.00) from our Study Group. Here is just a teaser of what meets you when you open up the book: 677 post offices listed; Pritchard and Andrews proof strikes with 261 replacements identified; split circle, cds, duplex proof strikes illustrate pre/post fire loss dates; and much more . . . a BNAPS Award Winner in 1996!

To borrow the book write to



J. Knierim
 RR1 Thornbury, ON
 N0H 2P0
 and send in your \$8.00 to cover postage both ways - a pre-paid return mailer is enclosed! *or* you can buy it direct from **Susan Sheffield**
 Box 67039 (Meadowlark P.O.)
 Edmonton, Alberta T5R 5Y3
 for just \$24.00 postage paid!

Send your non-commercial ads into the editor, Gus Knierim. For the time being these ads will be free of charge. Donation of a 45¢ stamp or two to cover general postage costs would be appreciated.

The Barrie District Stamp Club 37th ANNUAL EXHIBITION & DEALERS' BOURSE

SATURDAY, OCTOBER 24, 1998 – 10 to 5 p.m.

Sunnidale Community Centre
 SUNNIDALE ROAD, BARRIE

FREE ADMISSION

Stamps • 12 DEALERS • Postal History

2:30 p.m.

MEETING OF THE
**Grey, Bruce, Dufferin & Simcoe
 Postal History Study Group**

OUR FIRST GATHERING
 Informal • Enjoyable
 DROP BY
 See you at the Show

Dufferin County Post Offices [REF. 044]

The original Canada Post list was dated February 10, 1993. This listing has been amended over the years. All such additions are printed in **BOLD**. The householder count refers to the number of drop-off points for each office. It is the number used for "Ad Mail" – all those pieces of printing that you never asked for but got just the same. This number is an excellent source to evaluate the size of the operation and the scarcity of postmarks.

HOUSEHOLDER COUNT is taken from the December 1997 Issue of Householder Counts for Rural Delivery, Canada Post Corporation.

930210	410306	CONOVER (SHELBURNE) RO RR 3, SHELBURNE, ON L0N 1S0 44, 1990 07 01, 1992 09 18	930210	334448	ORANGEVILLE 216 BROADWAY AVENUE ORANGEVILLE, ON L9W 1L0 15,11010101,0
930210	331937	GRAND VALLEY 9 MILL STREET, GRAND VALLEY, ON L0N 1G0 14,11010101,0 [Householder Count – 1409, incl. 4 RR's]	930210	398268	ORANGEVILLE RPO 1 150 FIRST ST, ORANGEVILLE, ON L9W 3T0 12, 1981 09 01, 1992 06 16
930210	410179	GRAND VALLEY RO 23 MAIN ST BOX 414 GRAND VALLEY, ON L0N 1G0 44, 1989 06 01, 1990 03 14	930210	059102	ORANGEVILLE MALL RO 150 FIRST ST, ORANGEVILLE, ON L9W 3T7 43, 1991 06 19, 1991 06 20 [Not likely that this franchise materialized]
930210	012122	GRAND VALLEY RO 24 WESTSIDE MAIN STREET GRAND VALLEY, ON L0S 1N0 44, 1990 03 12, 1992 08 31	930210	076953	ORANGEVILLE MALL RO [successor to Orangeville RPO 1] 150 FIRST ST, ORANGEVILLE, ON L9W 3S0 43, 1992 06 16, 0
930210	332585	HONEYWOOD COUNTY RD 21, HONEYWOOD, ON L0N 1H0 11,11010101, 1991 07 16	930210	409707	ORANGEVILLE RO HWY 9, RR 8, ORANGEVILLE, ON L9W 3T5 44, 1989 05 31, 0
930210	409774	HONEYWOOD/SHELBURNE RPO 2 HONEYWOOD, ON L0N 1H0 12, 1989 06 01, 1989 07 24	930210	404942	ORANGEVILLE RPO 2 25 BROADWAY AVENUE, UNIT 4 ORANGEVILLE, ON L9W 1J0 12, 1987 06 01, 1988 02 01
930210	063118	HONEYWOOD RO P.O. BOX 2, HONEYWOOD, ON L0N 1H0 44, 1991 06 17, 0 [Householder Count – 113, incl. 1 RR]	930210	333190	ORANGEVILLE RPO 3 169 BROADWAY AVE, ORANGEVILLE, ON L9W 1K0 12, 1970 03 17, 1987 12 28
930210	333174	LAUREL 10TH SIDE ROAD, LAUREL, ON L0N 1L0 11,11010101, 1991 07 16	930210	404950	ORANGEVILLE RPO 4 400 TOWN RD, ORANGEVILLE, ON L9W 3Z0 12, 1987 06 01, 1987 11 09
930210	410268	LAUREL/ORANGEVILLE RPO 6 LAUREL, ON L0N 1L0 12, 1989 08 01, 1989 09 25	930210	404969	ORANGEVILLE RPO 5 15 BRENDA BLVD, ORANGEVILLE, ON L9W 3L0 12, 1987 06 01, 1988 04 30
930210	010278	LAUREL RO 10 SIDE ROAD EAST, LAUREL, ON L0N 1L0 44, 1989 09 25, 1990 10 18	930210	334499	ORTON MAIN ST, ORTON, ON L0N 1N0 11,11010101, 1990 03 01
930210	073334	LAUREL RO GENERAL DELIVERY, LAUREL, ON L0N 1L0 44, 1991 12 20, 0 [Householder Count – 76, incl. 1 SS] [There may not be a postal facility here other than the Sub. Mail Boxes]	930210	010391	ORTON/HILLSBURGH RPO 1 ORTON, ON L0N 1N0 12, 1990 03 01, 1990 07 30
930210	333433	MANSFIELD AIRPORT ROAD, MANSFIELD, ON L0N 1M0 11,11010101, 1988 04 08	930210	011495	ORTON RO COUNTY ROAD # 3, ORTON, ON L0N 1N0 44, 1990 03 01, 1992 02 28
930210	405523	MANSFIELD/SHELBURNE RPO 1 AIRPORT RD, MANSFIELD, ON L0N 1M0 12, 1988 04 08, 1989 03 06	930210	076716	ORTON RO GENERAL DELIVERY, ORTON, ON L0N 1M0 44, 1992 02 29, 0 [Householder Count – 417, incl. 3 RR's]
930210	409316	MANSFIELD RO GEN DELIVERY, MANSFIELD, ON L0N 1M0 44, 1989 03 06, 0 [Householder Count – 495, incl. 2 RR's]	930210	335045	ROSEMONT HIGHWAY 89, ROSEMONT, ON L0N 1R0 11,11010101, 1991 07 30
			930210	059854	ROSEMONT/SHELBURNE RPO 3 ROSEMONT, ON L0N 1R0 12, 1991 04 29, 1991 05 22
			930210	059420	ROSEMONT RO GEN DELIVERY, ROSEMONT, ON L0N 1R0 44, 1991 05 22, 0 [Householder Count – 232, incl. 1 RR]
			930210	335452	SHELBURNE 131 FIRST AVE E, SHELBURNE, ON L0N 1S0 14,11010101,0 [Householder Count – 2856, incl. 5 RR's and 4 SS installations]
			930210	410225	SHELBURNE RO 120 MAIN STREET EAST SHELBURNE, ON L0N 1S0 44, 1990 02 21, 0

*This list is of value only if it can be kept up-to-date.
I would appreciate very much if you would report any changes to
Gus Knierim, RR1, Thornbury, Ontario NOH 2PO
In return I would send you periodically a new print-out of these 2 pages*