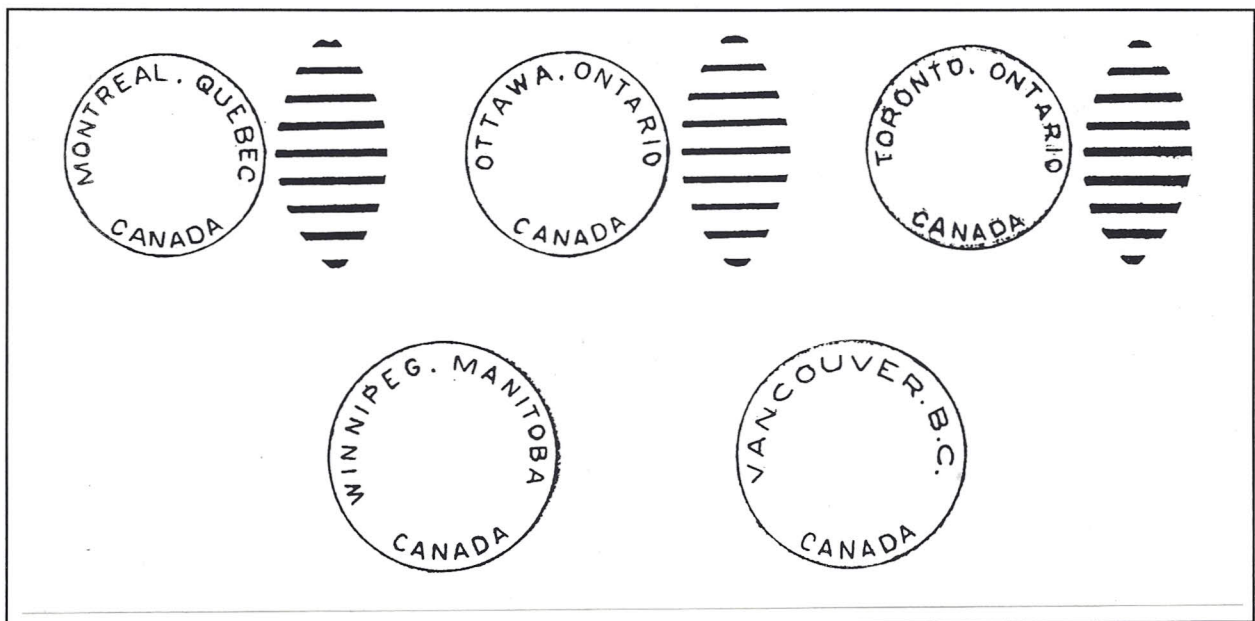


THE PITNEY-BOWES EXPERIMENTAL HANDSTAMPS OF 1948

In 1948, the Pitney-Bowes Company of Stamford, Connecticut supplied the Canadian Post Office Department with samples of two new styles of cancelling hammers, one a duplex and the other a large circular datestamp. These were to be tested in the Montreal, Ottawa, Toronto, Winnipeg and Vancouver post offices in as wide a variety of operating conditions as possible.



Undated proof strikes of the five Pitney-Bowes handstamps, photocopied from National Archives of Canada, RG3, vol. 2397, file 76-2-2.

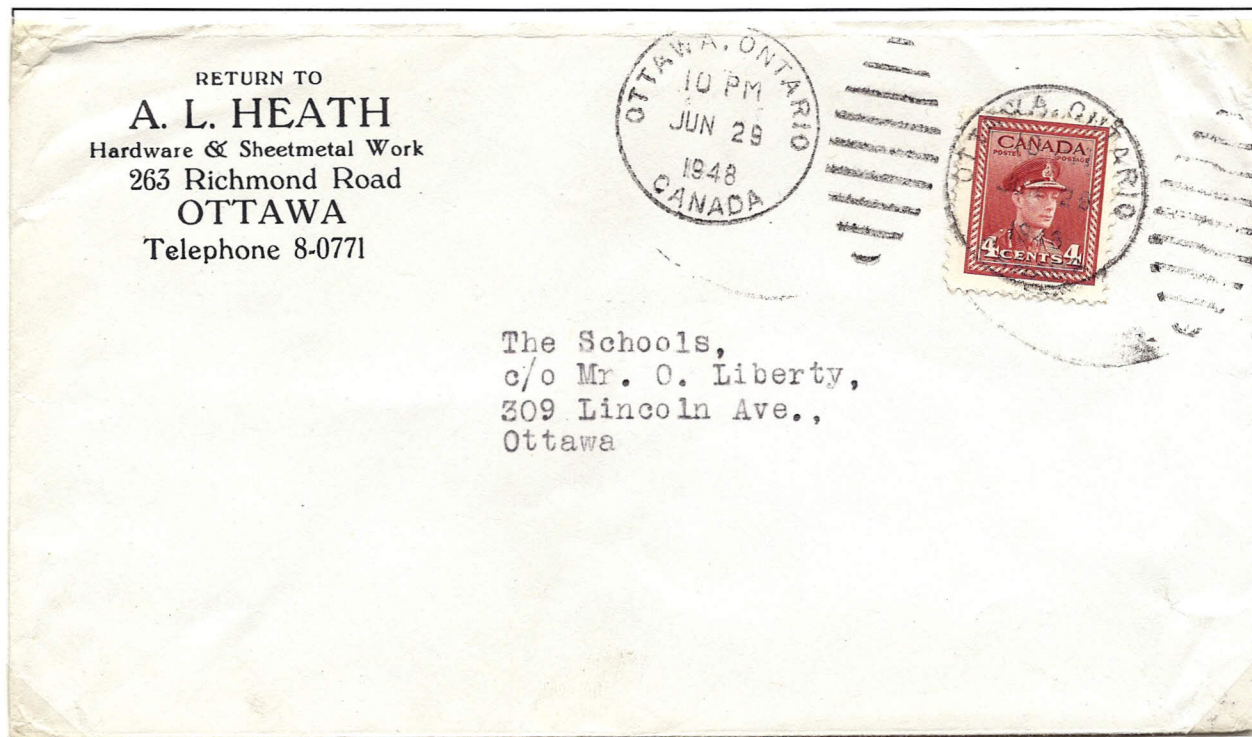
For a period of a few weeks in the summer of 1948, these postmarking devices were tested in many different departments in the five post offices mentioned. They were then returned with operational reports to Headquarters in Ottawa for evaluation. There they languished until September 1950, when the Post Office Department informed Pitney-Bowes that it could not find sufficient justification for replacing current equipment with the new handstamps.

OTTAWA. ONTARIO / CANADA 9-bar duplex



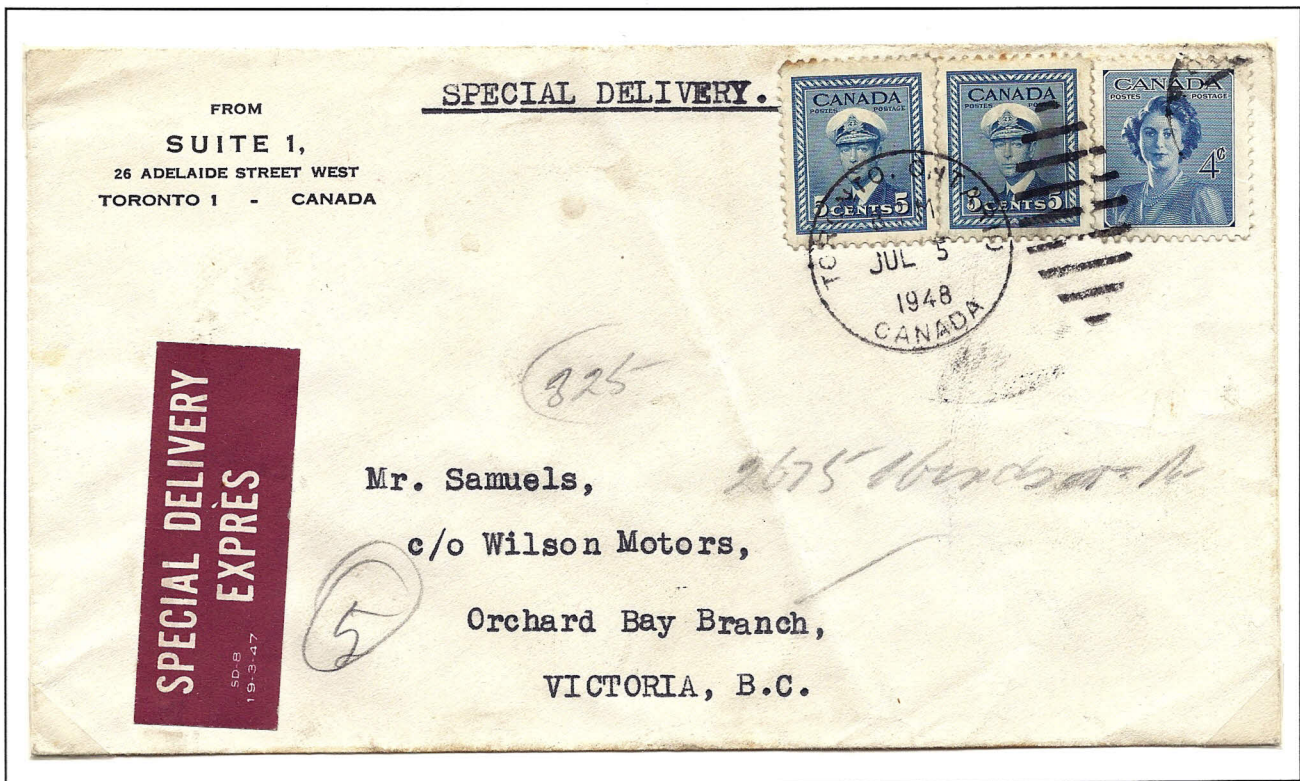
The OTTAWA. ONTARIO / CANADA Pitney-Bowes experimental duplex dated 1 PM / JUN 23 / 1948, used to postmark a cover mailed at the 7¢ domestic airmail rate from Ottawa to Victoria, B.C.

OTTAWA. ONTARIO / CANADA 9-bar duplex



The OTTAWA. ONTARIO / CANADA Pitney-Bowes experimental duplex
dated 10 PM / JUN 29 / 1948,
used to postmark a cover mailed at the 4¢ domestic drop letter rate.

TORONTO. ONTARIO / CANADA 9-bar duplex



The TORONTO. ONTARIO / CANADA 9-bar Pitney-Bowes experimental duplex device dated 8 PM / JUL 5 / 1948, used on a Special Delivery cover addressed to Victoria, B.C., where a VICTORIA / B.C. circular datestamp receiving mark was applied on JUL 6 / 48, time mark 15.

WINNIPEG. MANITOBA / CANADA circular datestamp



The WINNIPEG. MANITOBA / CANADA Pitney-Bowes circular datestamp
of 4 PM / JUN17 / 1948, used on an airmail letter to The Hague, Holland
with postage of 30¢, the rate for a letter weighing up to ½ ounce.

VANCOUVER. B.C. / CANADA circular datestamp



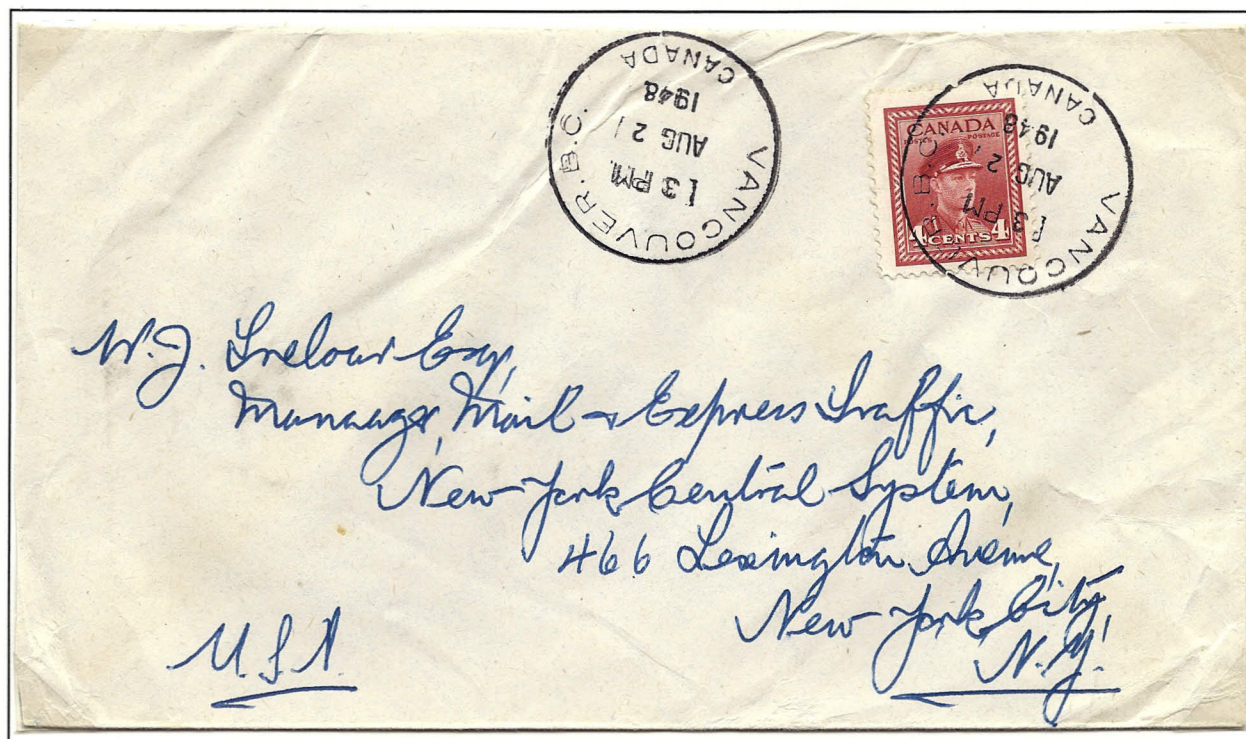
The VANCOUVER. B.C. / CANADA Pitney-Bowes circular datestamp of 3 PM / JUL 8 / 1948, used on an Air Mail Special Delivery cover addressed to Hamilton, Ontario.

VANCOUVER. B.C. / CANADA circular datestamp



The VANCOUVER. B.C. / CANADA Pitney-Bowes circular datestamp of 12 M / JUL 23 / 1948, used on an Air Mail Special Delivery cover addressed to Hamilton, Ontario. 12 M was an abbreviation used on daters by the Post Office Department to denote Midday (noon).

VANCOUVER. B.C. / CANADA circular datestamp



The VANCOUVER. B.C. / CANADA Pitney-Bowes circular datestamp of 3 PM / AUG 2 / 1948, used on a first-class letter addressed to New York City.