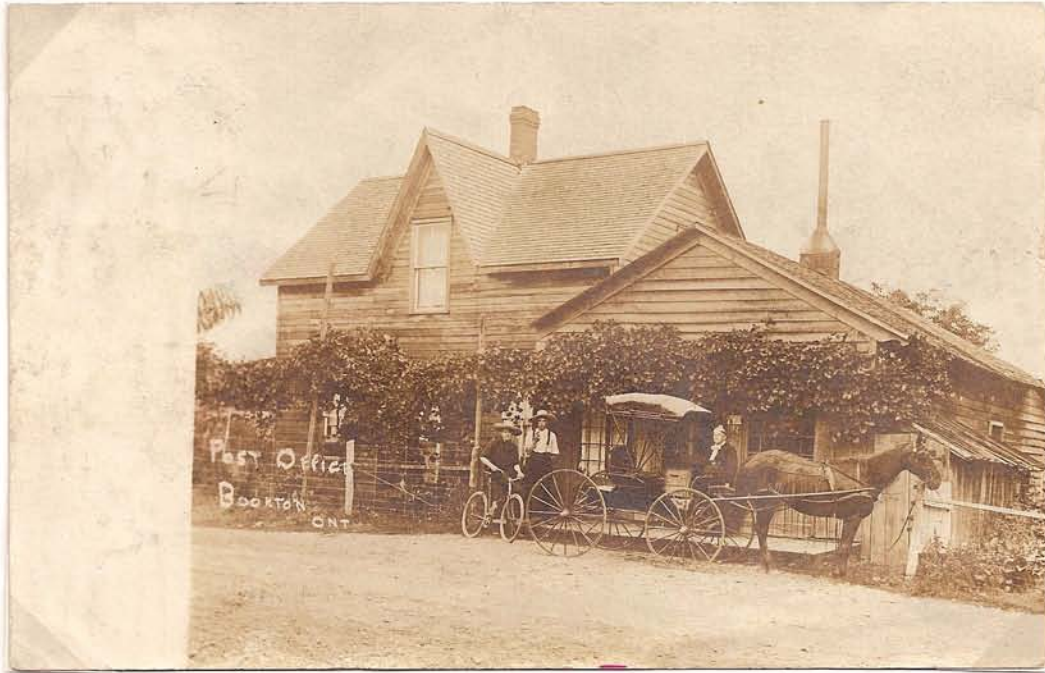


# SMALL-TOWN ONTARIO POST OFFICES

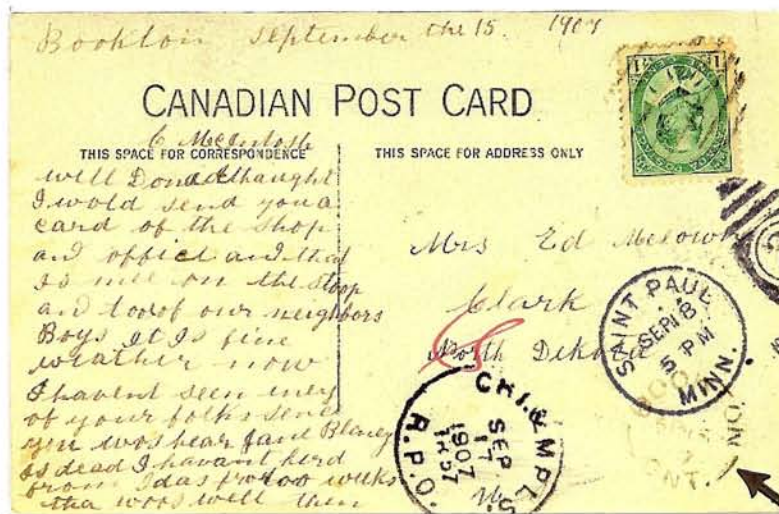
"Real photo" postcards of Ontario post offices, with contemporaneous postmarks.

BOOKTON

Norfolk County



Postcard showing the general store and post office at Bookton, Ont., with a scan of the back below. It was written by postmistress Mrs. Caroline McIntosh, shows her "on the stoop", and is postmarked with the BOOKTON / ONT. broken circle on SP 15 / 07.



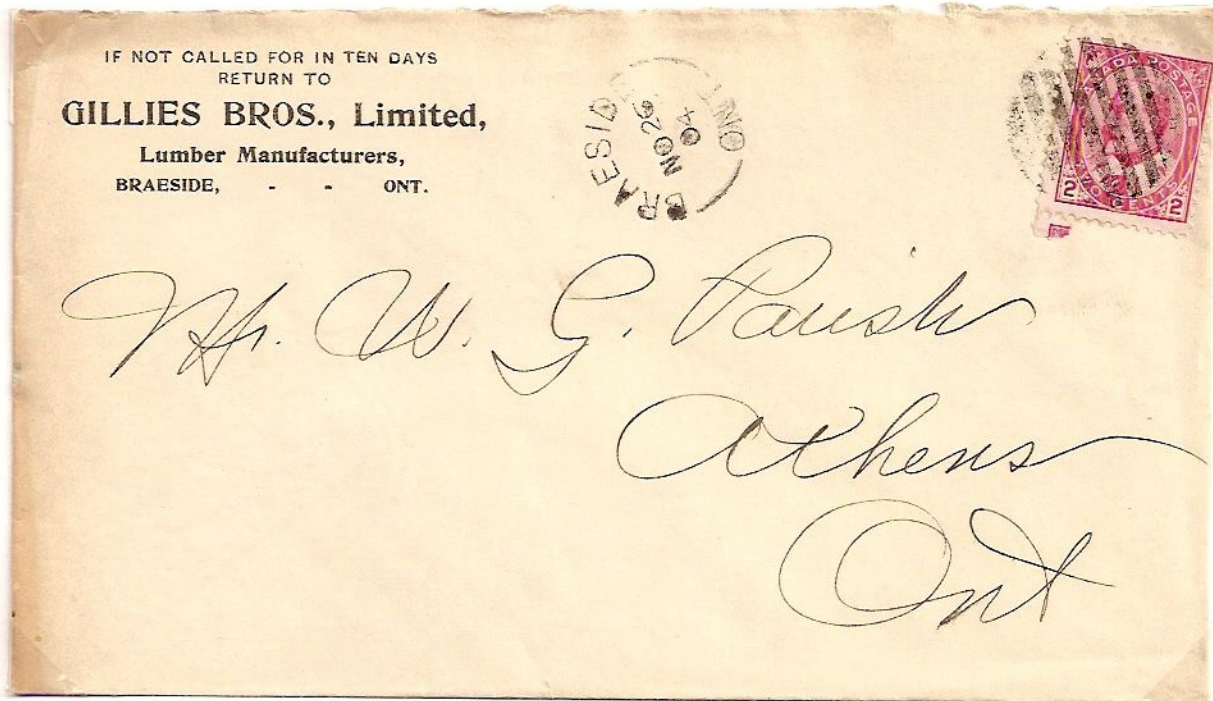
Back of card, 75% size.

BRAESIDE

Renfrew County



Postcard showing the Braeside post office, postmarked there on FE 22 / 06. Below, a corner card from Gillies Bros. Lumber Manufacturers of Braeside, postmarked there on NO 26 / 04. John Gillies was postmaster at Braeside from 1873 to 1914.





BRYANSTON

Middlesex County

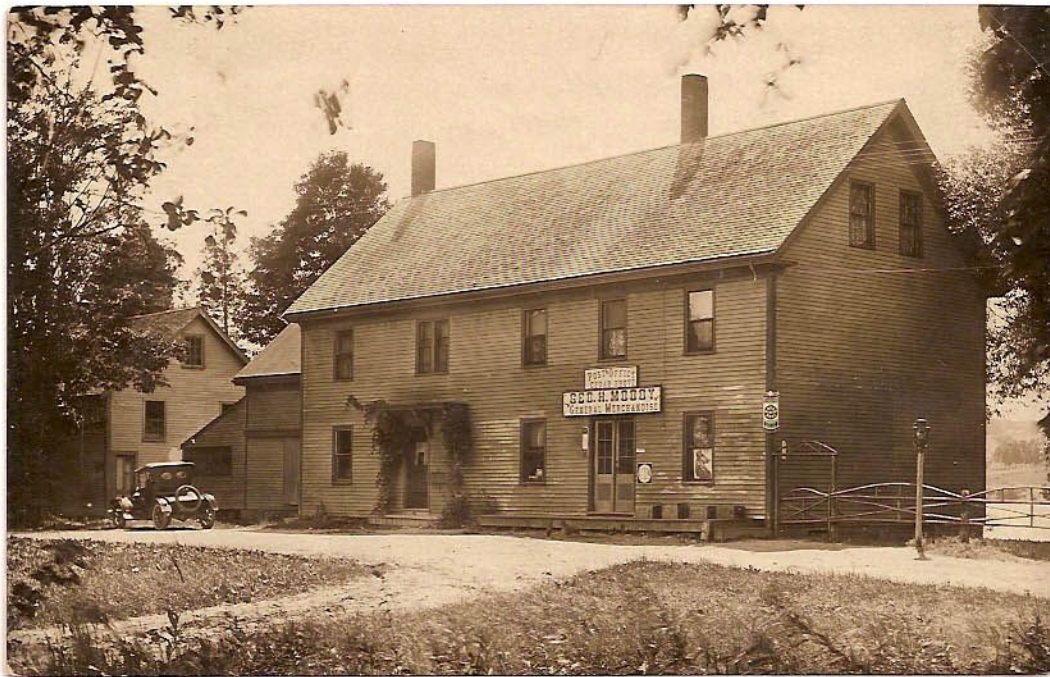


Unused postcard showing the Bryanston post office and general store in the early 20th century, when Alexander Grant was postmaster, and a cover to London, Ont., post-marked with the BRYANSTON / ONT 20½ mm broken circle on AP 5 / 00.



CEDAR GROVE

York County



Unused postcard of the early 20th century showing George H. Moody's general store and post office at Cedar Grove, with a cover addressed to Hamilton and postmarked with the 20 mm CEDAR-GROVE / ONT. broken circle dated on June 30, 1905.





CLARKSON

Peel County



E. M. Clarkson's store and post office at Clarkson, shown on an unused postcard of the early 20th century; below, a cover postmarked with the CLARKSON / ONT 20 mm broken circle on OC 18 / 09 addressed to Perth, Ont., and forwarded to Rideau Ferry.

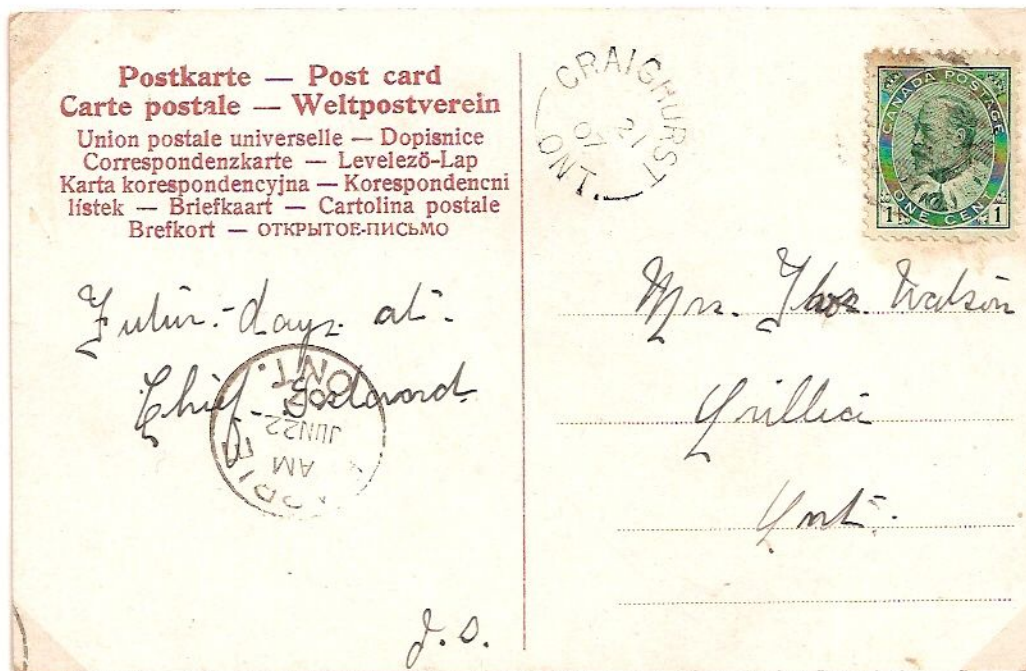


# CRAIGHURST

# Simcoe County



Photocard dated August 9, 1910 showing the store and post office of postmaster (from 1907 to 1918) Thomas Hill at Craighurst, and below, a card addressed to Orillia and postmarked with the CRAIGHURST / ONT. 20 mm broken circle on June 21, 1907.



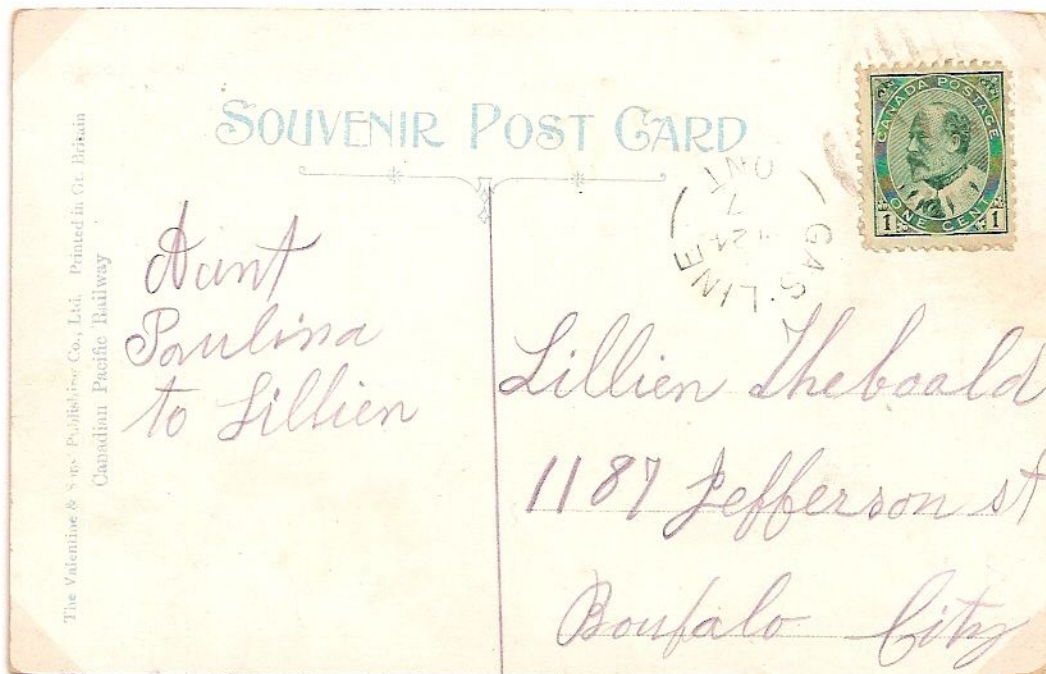


GAS LINE

Welland County



Postcard dated on July 28, 1909 showing the post office at Gas Line, when Daniel J. Robins was postmaster. Below, an Edward VII postcard addressed to Buffalo, N.Y. and postmarked with the GAS·LINE / ONT. 21 mm broken circle on July 24, 1907.



MOUNT SALEM

Elgin County



Unused postcard showing the Mount Salem post office and general store in the early 20th century, when Mrs. Alice Hilliker was postmistress, and a registered cover to Toronto, postmarked with the MOUNT SALEM / ONT broken circle on AU 26 / 03.





# MUSKOKA STATION

# Muskoka District



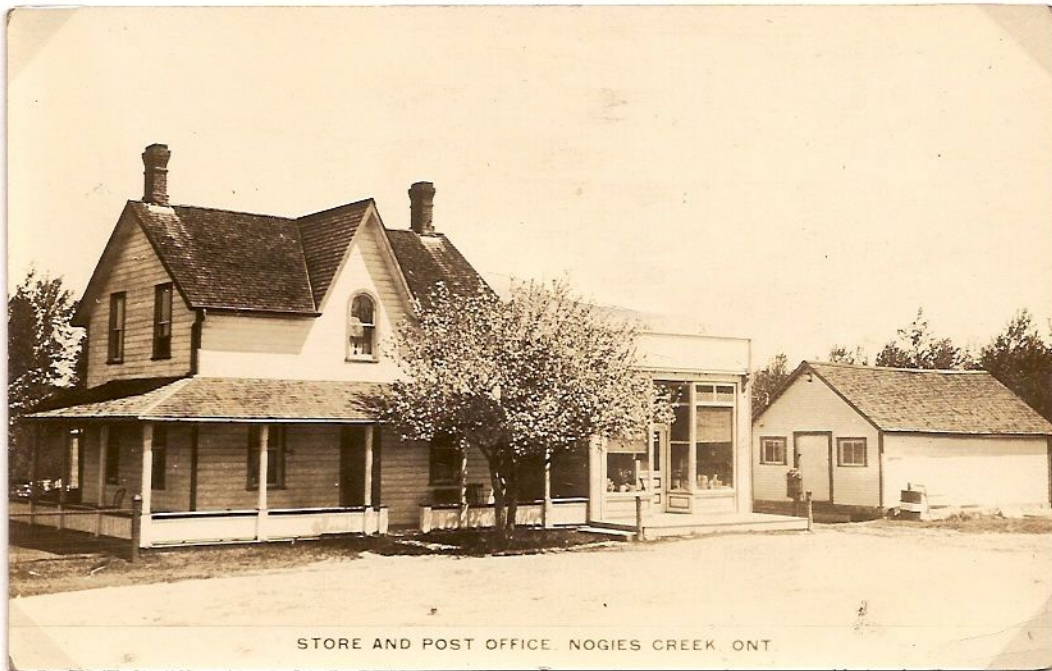
Postcard mailed on JA 23 / 13 showing the Muskoka Station general store and post office of postmaster Hugh Anderson, and below, an Admiral postcard of AU 25 / 15. The post office opened on March 1, 1909, and became MacTier on November 1, 1915.



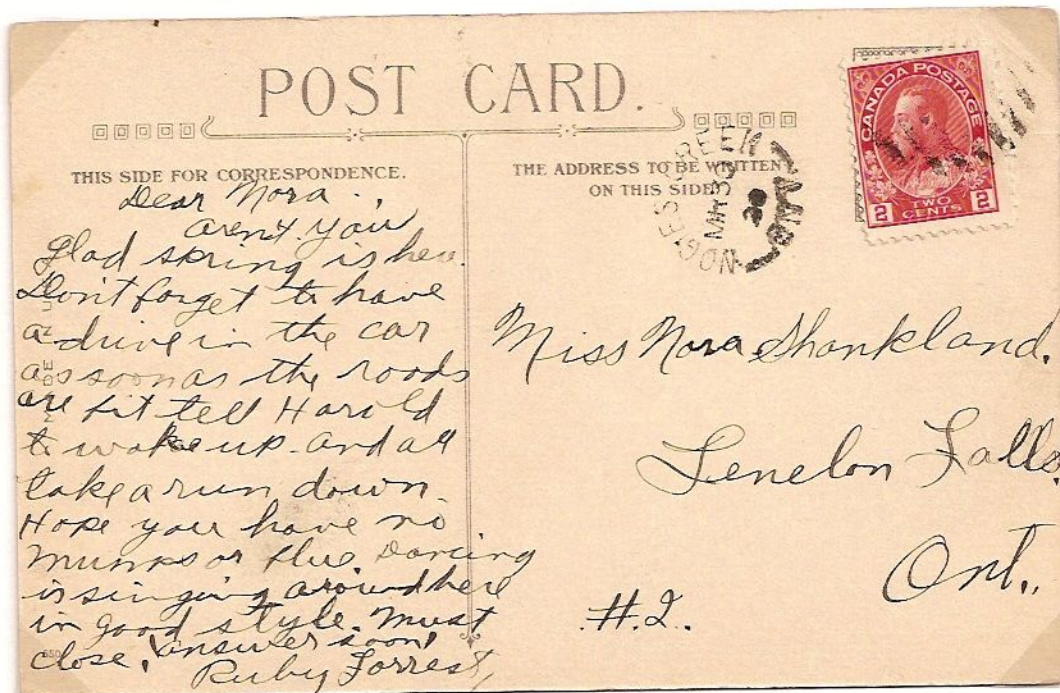


NOGIES CREEK

Peterborough County



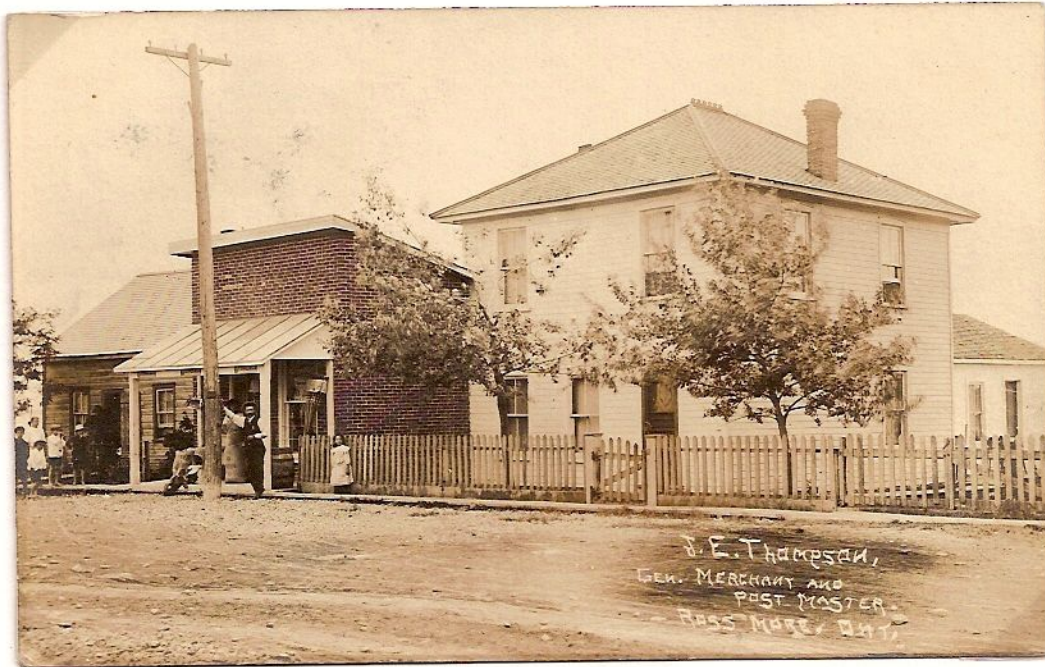
Card showing the store and post office of James L. Beatty, postmaster from 1907 to 1936 at Nogies Creek, and below, a card addressed to nearby Fenelon Falls and post-marked with a NOGIES CREEK / ONT 19 1/2 mm broken circle on March 30, 1920.





ROSSMORE

Prince Edward County



J. M. Thompson's store and post office at Rossmore shown on a postcard of SP 7 / 11, and a card addressed to Altamont, N.Y., franked with a Quebec Tercentennial stamp and postmarked with the ROSS-MORE / ONT broken circle on JUL 26 / 08.





# SOUTH PORCUPINE

# Cochrane District



Unused postcard showing the 'post office' at South Porcupine after the devastating fire of July 11, 1911 destroyed the town - note POST OFFICE sign at left. Below, a postcard showing the SOUTH PORCUPINE / ONT. circular datestamp of MR 29 / 12.



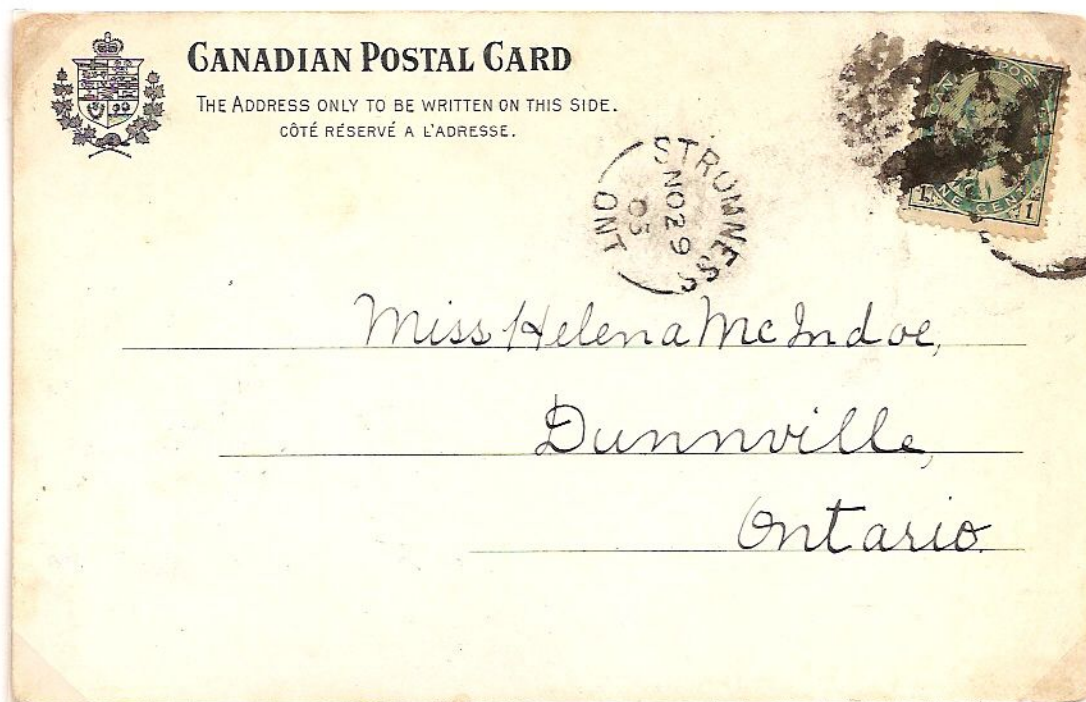


# STROMNESS

# Haldimand County



Edward-era postcard showing the post office at Stromness, Ont. Below, a patriotic card postmarked with the STROMNESS / ONT broken circle on NO 29 / 05, while Samuel Lapp was serving as postmaster. This office was closed on July 31, 1914.





# THORPE

# Lennox & Addington County



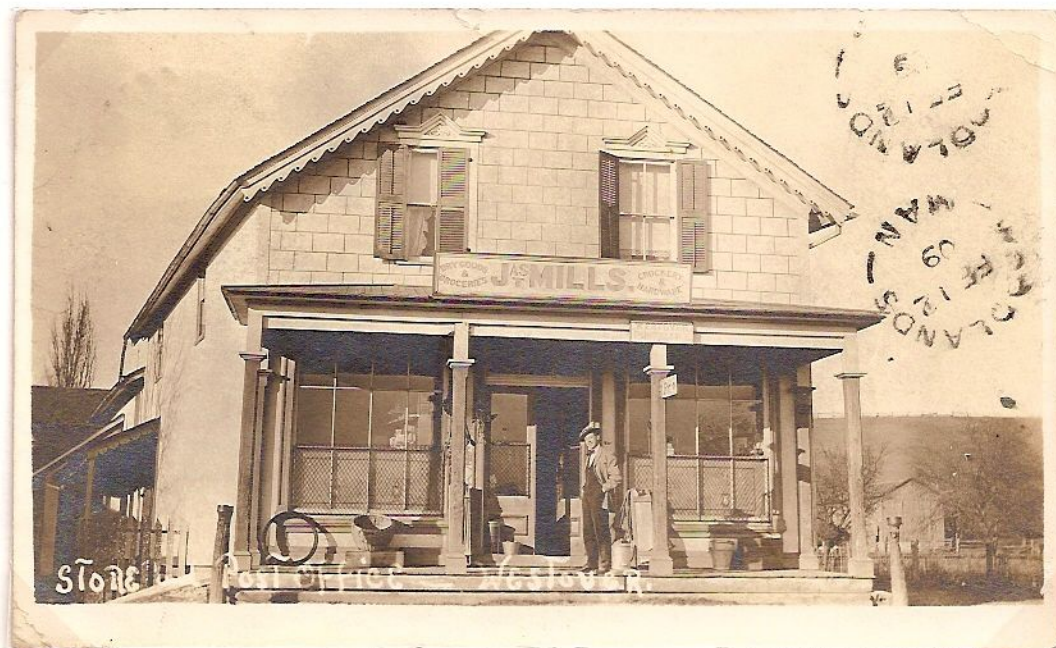
Card dated June 21, 1909 showing the post office of postmaster (from 1887 to 1914) Chester B. Peters at Thorpe, and below, a card addressed to Thorpe from Oxbow, Sask. with a THORPE / ONT. 19 mm broken circle receiving mark of AU 28 / 11.





WESTOVER

Wentworth County



Postcard mailed on FE 6 / 09 showing the store and post office of postmaster James Mills at Westover, Ont. Below, a cover postmarked with the WESTOVER · ONT. / CANADA broken circle on AP 18 / 04. This office was closed on December 31, 1913.



ZEPHYR

Ontario County



Postcard mailed on JU 12 / 08 showing the store and post office at Zephyr, Ont. The cover below was postmarked with the ZEPHYR / ONT. broken circle on AP 1 / 04. These were both mailed during the term of office of postmaster George Hagerman.

