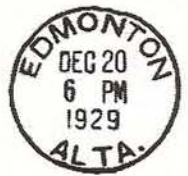


COMMERCIAL AIRWAYS—DECEMBER 1929



**Inbound:** Dec. 16 McMurray to Resolution (AJQ Lumsden, AKI May);  
 Dec. 17 Resolution to Providence (AJQ Becker, AKI May)  
**Outbound:** Dec. 17 Providence to Resolution (AJQ Becker, AKI May);  
 Dec. 18 Resolution to McMurray (AAL Burbidge, AJQ Lumsden, AJR Glyn-Roberts)  
 Dec. 19 McMurray to Edmonton (AAL Becker)



**Inbound:** Dec. 16 McMurray to Resolution (AJQ Lumsden, AKI May);  
 Dec. 17 Resolution to Providence (AJQ Becker, AKI May)  
**Outbound:** Dec. 19 Providence to Resolution (AKI May);  
 Dec. 20 Resolution to Simpson (AJQ Lumsden, AJR Glyn-Roberts, AKI May);  
 Dec. 22 Simpson to McMurray (AJR Glyn-Roberts)

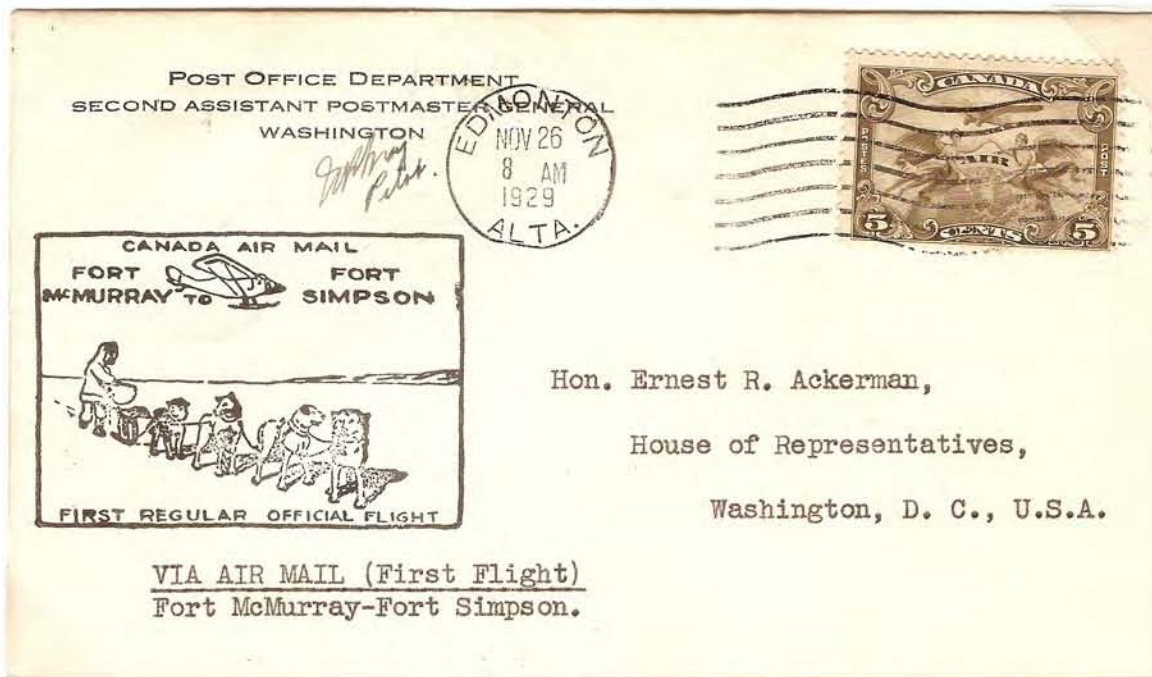
Philatelic covers from Fort Providence. Top pilot-signed air mail cover shows use of the special circle date stamp (B1) and is addressed to the District Superintendent of Postal Services in Edmonton. Bottom letter rated cover flown from Fort Providence on a later flight.

COMMERCIAL AIRWAYS—DECEMBER 1929



**Inbound:** Dec. 16 McMurray to Resolution (AJQ Lumsden, AKI May);  
Dec. 17 Resolution to Providence (AJQ Becker, AKI May)  
**Outbound:** Dec. 17 Providence to Resolution (AJQ Becker, AKI May);  
Dec. 18 Resolution to McMurray (AAL Burbidge, AJQ Lumsden, AJR Glyn-Roberts)

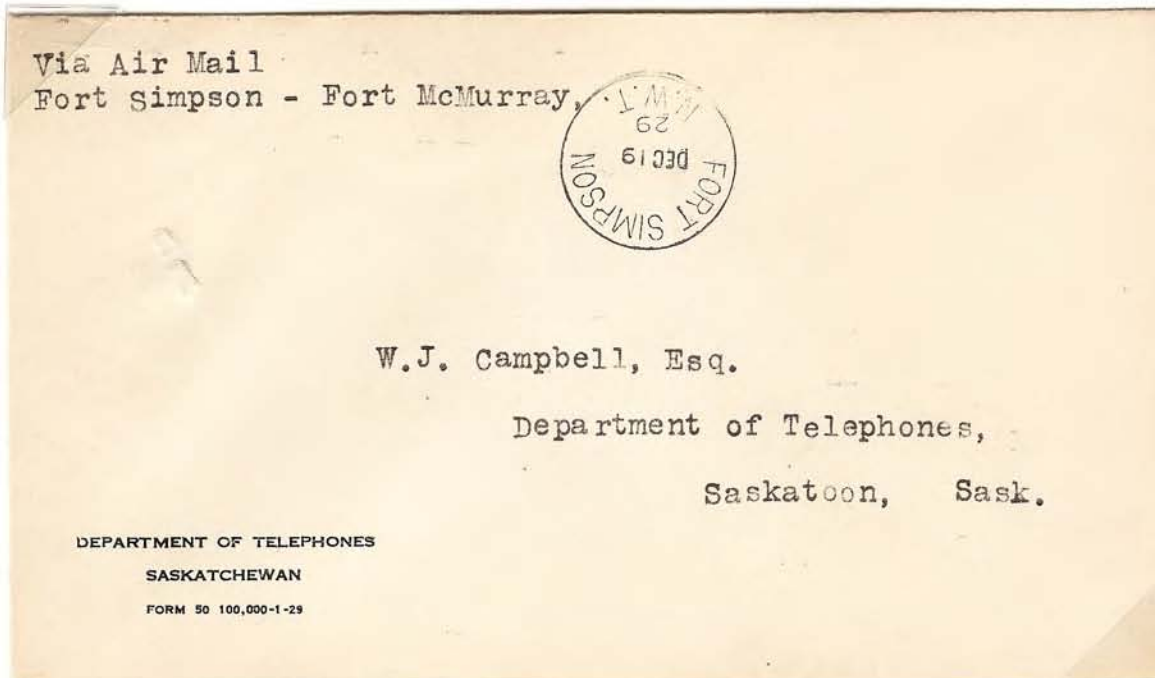
Philatelic registered cover from Fort Providence showing use of the special circle date stamp (B1) and special registration box (R2) that appears to have been left at this post office as it is recorded used until at least 1982. Most of the registered philatelic covers from other post office show use of the regular date stamps. This cover was flown to Fort Resolution and then back to Fort McMurray the following day. It appears to have been taken by train back to Edmonton.



**Inbound:** Dec. 17 McMurray to Resolution (AAL Burbidge, AJR Glyn-Roberts);  
Dec. 18 Resolution to Simpson (AKI May)  
**Outbound:** Dec. 22 Simpson to McMurray (AJQ Lumsden)

Philatelic cacheted covers carried to Fort Simpson with registered cover at top showing use of the regular circle date stamp (B2) while the bottom has the special circle date stamp (B1) and is signed by the Pilot May.

COMMERCIAL AIRWAYS—DECEMBER 1929



**Outbound:** Dec. 19 Simpson to Resolution (AKI May) and return from Aklavik

Top philatelic air mail cover sent from Fort Simpson and signed by the postmaster at that point showing use of the regular circle date stamp (B2). It is not clear when the cover was returned. Bottom cover appears to have been a favour cover, showing the special circle date stamp (B1), carried by Postal Inspector Hale and not date stamped until the return of the flights to Edmonton. All of the mail from north of Fort Simpson appears to have been returned to Edmonton on January 10. Given that the air mail arrived in Fort McMurray on January 2 and 3, 1930, it was likely carried by train to Edmonton on January 10.

COMMERCIAL AIRWAYS—DECEMBER 1929



**Inbound:** Dec. 17 McMurray to Resolution (AAL Burbidge, AJR Glyn-Roberts);  
Dec. 18 Resolution to Simpson (AKI May)  
**Outbound:** Dec. 22 Simpson to McMurray (AJQ Lumsden)

Philatelic cacheted registered cover from Fort Simpson with use of the regular date stamps (B2) and the special registration box (R3) known used only on this date. Cover appears to have been returned to Edmonton from Fort McMurray by train.



PENALTY FOR PRIVATE USE TO AVOID  
PAYMENT OF POSTAGE: \$900



WRIGLEY,  
CANADA

N.W.T.

VIA AIR MAIL

AIR MAIL

Walter Q. Ashley,  
373 Park Avenue,  
East Orange, New Jersey,  
U. S. A.

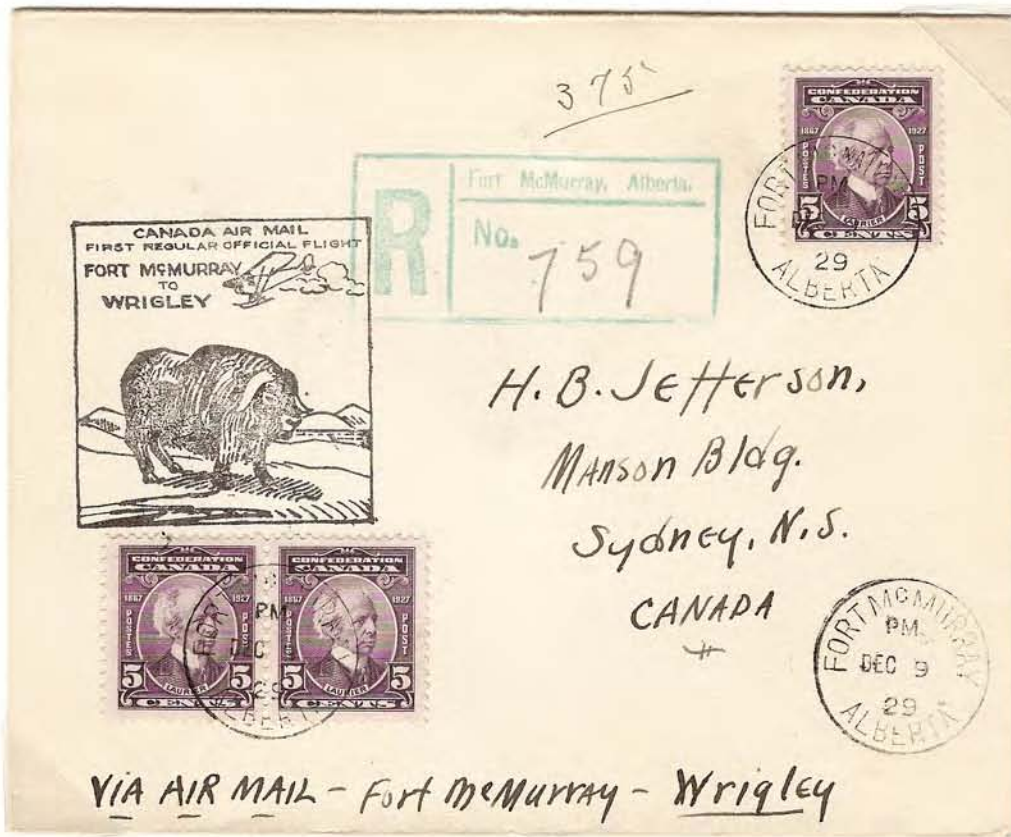
From Postmaster  
UNITED STATES VETERANS BUREAU  
REGIONAL OFFICE  
14 BLEECKER ST.  
NEWARK, N. J.

OFFICIAL BUSINESS  
RETURN AFTER FIVE DAYS

Via Air Mail  
and Ft. Murray Can.

*Walter Q. Ashley*

Self-addressed philatelic cover at first class rate carried from Wrigley. Note use of the Wrigley broken circle date stamp (A1) and the signature of the postmaster. The first regular official flight into Wrigley did not take place until December 22 so the date stamp is wrong or the item was carried in prior to the freeze-up in October-November.



**Inbound:** Dec. 19 McMurray to Resolution (AJQ Lumsden, AJR Glyn-Roberts);  
Dec. 20 Resolution to Simpson (AJQ Lumsden, AJR Glyn-Roberts, AKI May);  
Dec. 22 Simpson to Wrigley (AKI May)

**Outbound:** Dec. 22 Wrigley to Norman (AKI May); Dec. 23 Norman to Simpson (AKI May);  
Jan. 2 Simpson to McMurray (AJQ Becker, AKI May)

Two philatelic air mail covers sent to Wrigley. Both covers appear to have been returned at the end of the flights from Aklavik. Top registered air mail cover has the regular Wrigley circle date stamp (B2) while the bottom pilot-signed cover has the special circle date stamp (B1).

COMMERCIAL AIRWAYS—DECEMBER 1929



**Inbound:** Dec. 19 McMurray to Resolution (AJQ Lumsden, AJR Glyn-Roberts);

Dec. 20 Resolution to Simpson (AJQ Lumsden, AJR Glyn-Roberts, AKI May);

Dec. 22 Simpson to Wrigley (AKI May)

**Outbound:** Dec. 22 Wrigley to Norman (AKI May); Dec. 23 Norman to Simpson (AKI May);

Jan. 2 Simpson to McMurray (AJQ Becker, AKI May)

Philatelic cacheted registered cover from Wrigley with use of the regular circle date stamp (B2) and the special registration box (R2). The registration box appears to have been left in the post office and used regularly until at least 1968.



COMMERCIAL AIRWAYS—DECEMBER 1929



**Inbound:** Dec. 19 McMurray to Resolution (AJQ Lumsden, AJR Glyn-Roberts);  
 Dec. 20 Resolution to Simpson (AJQ Lumsden, AJR Glyn-Roberts, AKI May);  
 Dec. 22 Simpson to Norman (AKI May)

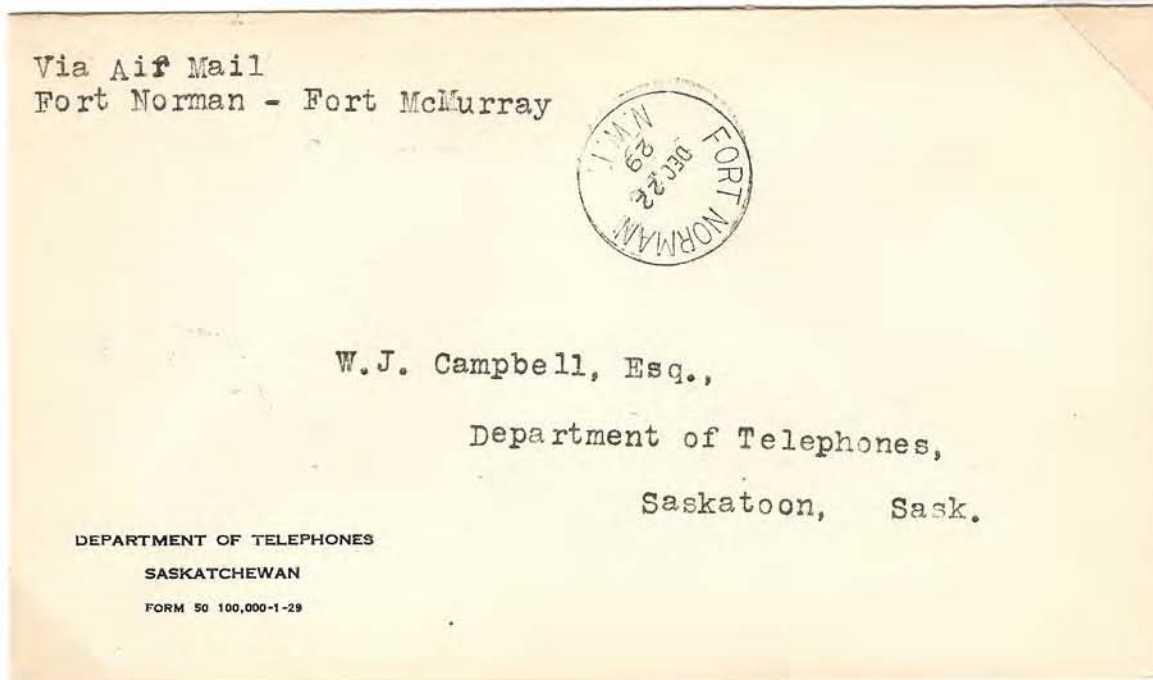


**Inbound:** Dec. 19 McMurray to Resolution (AJQ Lumsden, AJR Glyn-Roberts);  
 Dec. 20 Resolution to Simpson (AJQ Lumsden, AJR Glyn-Roberts, AKI May);  
 Dec. 22 Simpson to Norman (AKI May)

**Outbound:** Dec. 23 Norman to Simpson (AKI May); Jan. 2 Simpson to McMurray (AJQ Becker, AKI May)

Top commercial registered air mail cover sent to Fort Norman and bottom philatelic cacheted air mail cover. Top cover shows use of the regular circle date stamp (B2). Bottom pilot-signed cover appears to have been returned at the end of the flights from Aklavik and shows use of the special circle date stamp (B1).

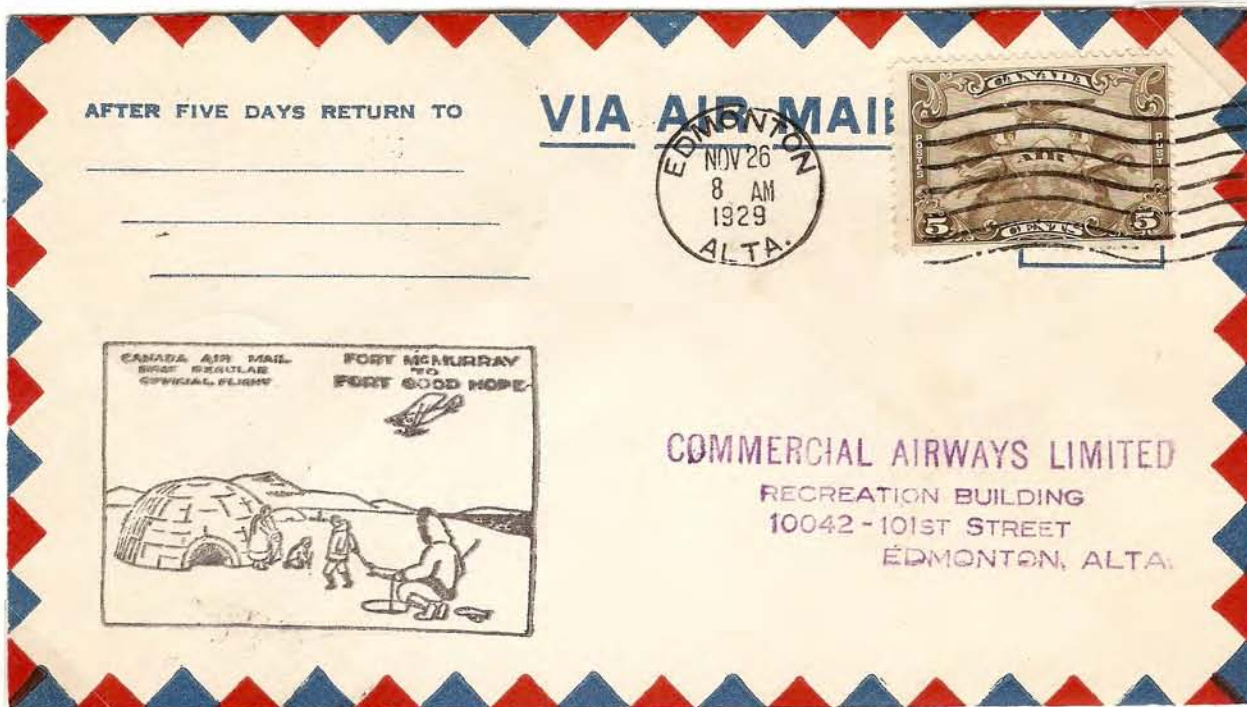
COMMERCIAL AIRWAYS—DECEMBER 1929



**Inbound:** Dec. 19 McMurray to Resolution (AJQ Lumsden, AJR Glyn-Roberts);  
Dec. 20 Resolution to Simpson (AJQ Lumsden, AJR Glyn-Roberts, AKI May);  
Dec. 22 Simpson to Norman (AKI May)  
**Outbound:** Dec. 23 Norman to Simpson (AKI May);  
Jan. 2 Simpson to McMurray (AJQ Becker, AKI May)

Top philatelic cacheted registered cover from Fort Norman with use of the regular date stamp (B2) and the special registration box (R4) known used only on this day. Bottom cover appears to have been a favour cover, showing the special circle date stamp (B1), carried by Postal Inspector Hale and not date stamped until the return of the flights to Edmonton.

COMMERCIAL AIRWAYS—DECEMBER 1929



**Inbound:** Dec. 19 McMurray to Resolution (AJQ Lumsden, AJR Glyn-Roberts);  
 Dec. 20 Resolution to Simpson (AJQ Lumsden, AJR Glyn-Roberts AKI May); Dec. 24 Simpson to Norman (AJQ Glyn-Roberts, AKI May); Dec. 25 Norman to Good Hope (AJQ Glyn-Roberts, AKI May)  
**Outbound:** Dec. 26 Good Hope to Arctic Red River and on to Aklavik and return (AJQ Glyn-Roberts, AKI May);  
 Jan. 2 Simpson to McMurray (AJQ Becker, AKI May)

Two philatelic cacheted air mail covers carried to Fort Good Hope on Christmas Day. Top registered cover shows use of the regular circle date stamp (B2) and return on the flights from Aklavik. Bottom cover to Commercial Airways office in Edmonton and shows use of the special circle date stamp (B1).

COMMERCIAL AIRWAYS—DECEMBER 1929



**Inbound:** Dec. 19 McMurray to Resolution (AJQ Lumsden, AJR Glyn-Roberts);  
 Dec. 20 Resolution to Simpson (AJQ Lumsden, AJR Glyn-Roberts AKI May); Dec. 24 Simpson to Norman (AJQ Glyn-Roberts, AKI May); Dec. 25 Norman to Good Hope (AJQ Glyn-Roberts, AKI May)  
**Outbound:** Jan. 1 Good Hope to Simpson (AJR Glyn-Roberts); Jan. 2 Simpson to Resolution (AJR Glyn-Roberts);  
 Jan. 3 Resolution to McMurray (AJR Glyn-Roberts)



**Inbound:** Dec. 19 McMurray to Resolution (AJQ Lumsden, AJR Glyn-Roberts);  
 Dec. 20 Resolution to Simpson (AJQ Lumsden, AJR Glyn-Roberts AKI May); Dec. 24 Simpson to Norman (AJQ Glyn-Roberts, AKI May); Dec. 25 Norman to Good Hope (AJQ Glyn-Roberts, AKI May)  
**Outbound:** Dec. 26 Good Hope to Arctic Red River and on to Aklavik and return (AJQ Glyn-Roberts, AKI May);  
 Jan. 2 Simpson to McMurray (AJQ Becker, AKI May)

Top letter-rated cover carried to Fort Good Hope on Christmas day from Fort Simpson and shows the last day of recorded use for the broken circle date stamp (A1) and return on the flight back from Aklavik. It is an important item as it shows the return flight by Glyn-Roberts who made all the stops. May went directly from Fort Simpson to Fort McMurray with Inspector Hale on board who favour-cancelled many covers on the return flight using the set of special circle date stamps. Bottom air mail cover shows use of the regular date stamp (B2) up to Aklavik and return.

COMMERCIAL AIRWAYS—DECEMBER 1929



**Inbound:** Dec. 19 McMurray to Resolution (AJQ Lumsden, AJR Glyn-Roberts); Dec. 20 Resolution to Simpson (AJQ Lumsden, AJR Glyn-Roberts AKI May); Dec. 24 Simpson to Norman (AJQ Glyn-Roberts, AKI May); Dec. 25 Norman to Good Hope (AJQ Glyn-Roberts, AKI May); Dec. 26 Good Hope to Arctic Red River (AJQ Glyn-Roberts, AKI May)

**Outbound:** Dec. 27 Arctic Red River to Aklavik (AJQ Glyn-Roberts, AKI May); Dec. 30 Aklavik to Arctic Red River (AJQ Glyn-Roberts, AKI May); Dec. 31 Arctic Red River to Wrigley (AKI May); Jan. 1 Wrigley to Simpson (AKI May); Jan. 2 Simpson to McMurray (AJQ Becker, AKI May)

Two letter-rated covers carried to Arctic Red River. Top cover shows the signature of the Arctic Red River postmaster and United States postage due stamps likely indicating short paid amount on a stack of first flight covers returned to the sender. Both covers show the last day of recorded use for the Arctic Red River broken circle date stamp (A1) and return on the flight back from Aklavik.

AFTER FIVE DAYS RETURN TO

VIA AIR MAIL



The Postmaster.  
Arctic Red River.  
N. W. T.

VIA EDMONTON.  
% Dept of Postal Service.



VIA AIR MAIL.  
Fort McMurray-Arctic Red River.



*W. Murray Pilot*



Hon. Horace Harvey,  
Court House,  
CALGARY, Alta.



**Inbound:** Dec. 19 McMurray to Resolution (AJQ Lumsden, AJR Glyn-Roberts);

Dec. 20 Resolution to Simpson (AJQ Lumsden, AJR Glyn-Roberts AKI May); Dec. 24 Simpson to Norman (AJQ Glyn-Roberts, AKI May);

Dec. 25 Norman to Good Hope (AJQ Glyn-Roberts, AKI May); Dec. 26 Good Hope to Arctic Red River (AJQ Glyn-Roberts, AKI May)

**Outbound:** Dec. 27 Arctic Red River to Aklavik (AJQ Glyn-Roberts, AKI May); Dec. 30 Aklavik to Arctic Red River (AJQ Glyn-Roberts,

AKI May); Dec. 31 Arctic Red River to Wrigley (AKI May); Jan. 1 Wrigley to Simpson (AKI May);

Jan. 2 Simpson to McMurray (AJQ Becker, AKI May)

Top air mail rated cover carried to Arctic Red River shows use of the regular circle date stamp (B2). Bottom air mail rated pilot-signed, cacheted covers shows use of the special circle date stamp (B1) returned on the southbound flights from Aklavik.

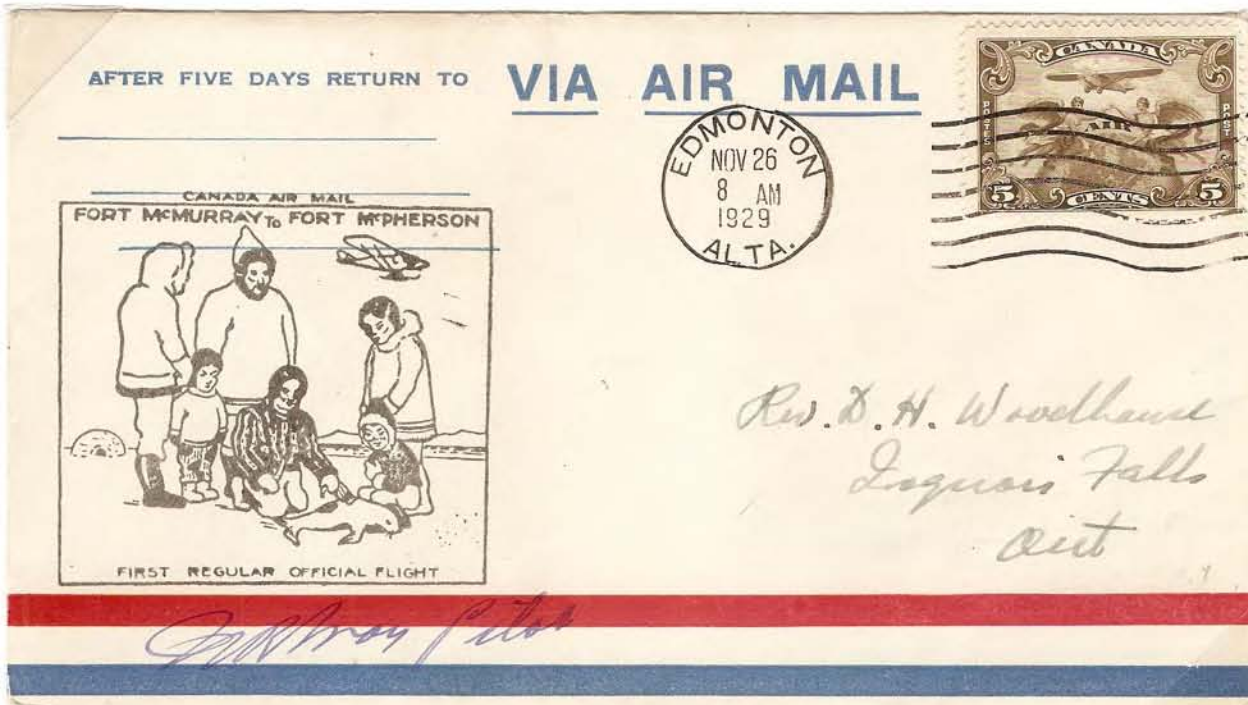
COMMERCIAL AIRWAYS—DECEMBER 1929



- Inbound:** Dec. 19 McMurray to Resolution (AJQ Lumsden, AJR Glyn-Roberts);  
Dec. 20 Resolution to Simpson (AJQ Lumsden, AJR Glyn-Roberts AKI May);  
Dec. 24 Simpson to Norman (AJQ Glyn-Roberts, AKI May);  
Dec. 25 Norman to Good Hope (AJQ Glyn-Roberts, AKI May);  
Dec. 26 Good Hope to Arctic Red River (AJQ Glyn-Roberts, AKI May)  
**Outbound:** Dec. 27 Arctic Red River to McPherson (AKI May);  
Dec. 27 McPherson to Aklavik (AKI May);  
Dec. 30 Aklavik to Arctic Red River (AJQ Glyn-Roberts, AKI May);  
Dec. 31 Arctic Red River to Wrigley (AKI May);  
Jan. 1 Wrigley to Simpson (AKI May);  
Jan. 2 Simpson to McMurray (AJQ Becker, AKI May)

Philatelic air mail cover carried from Arctic Red River to Fort McPherson and on to Aklavik, the end point of the flights. All circle date stamps are the regular (B2) for each office.

COMMERCIAL AIRWAYS—DECEMBER 1929



**Inbound:** Dec. 19 McMurray to Resolution (AJQ Lumsden, AJR Glyn-Roberts);  
Dec. 20 Resolution to Simpson (AJQ Lumsden, AJR Glyn-Roberts AKI May); Dec. 24 Simpson to Norman (AJQ Glyn-Roberts, AKI May); Dec. 25 Norman to Good Hope (AJQ Glyn-Roberts, AKI May); Dec. 26 Good Hope to Arctic Red River (AJQ Glyn-Roberts, AKI May); Dec. 27 Arctic Red River to Fort McPherson (AKI May)

Philatelic covers carried to Fort McPherson showing use of the special circle date stamps (B1). Top cover signed by May. Bottom cover appears to have been a favour cover carried by Postal Inspector Hale.